

Parts List

Ref	Var	IPN	Description	Ref	Var	IPN	Description	Ref	Var	IPN	Description
C103		015-26100-08	Cap Cer 0805 100n 10% X7r 50v	C349		015-24100-05	Cap Cer 0805 1N 100V 5% COG	C415		018-15150-00	Cap 0603 15n 50v X7r ±10%
C201		018-15470-00	Cap 0603 47n 16v X7r±10%	C350		015-24100-05	Cap Cer 0805 1N 100V 5% COG	C416		018-12820-10	Cap 0603 82p 50v NPO ±1%
C202		015-07470-20	CAP Cer 1206 4u7 10% 25V X7R	C353		015-22150-20	Cap Cer 0805 15p +-5% NPO 200v	C417		018-16100-00	Cap 0603 100n 16v x7r + - 10%
C203		018-16100-00	Cap 0603 100n 16v x7r + - 10%	C354		015-22150-20	Cap Cer 0805 15p +-5% NPO 200v	C418		018-16100-00	Cap 0603 100n 16v x7r + - 10%
C204		018-16100-00	Cap 0603 100n 16v x7r + - 10%	C355		015-22120-20	Cap Cer 0805 12p +-5% NPO 200v	C419		018-16100-00	Cap 0603 100n 16v x7r + - 10%
C206		018-13680-00	Cap 0603 680p 50v X7r±10%	C356		018-14100-00	Cap 0603 1n 50v X7r ±10%	C420		018-11820-10	Cap 0603 8p2 50v NPO±0.1p
C207		015-07220-08	Cap Cer 1206 2u2 16v X7r	C357		018-14100-00	Cap 0603 1n 50v X7r ±10%	C421		018-15100-00	Cap 0603 10n 50v X7r ±10%
C208		018-13680-00	Cap 0603 680p 50v X7r±10%	C358		018-12100-10	Cap 0603 10p 50v NPO±0.1	C422		018-12150-10	Cap 0603 15p 50v NPO ±1%
C209		018-16100-00	Cap 0603 100n 16v x7r + - 10%	C359		015-24100-08	Cap Cer 0805 1n 10% X7r 50v	C423		018-15100-00	Cap 0603 10n 50v X7r ±10%
C210		018-12680-10	Cap 0603 68p 50v NPO ±1%	C361		015-22120-20	Cap Cer 0805 12p +-5% NPO 200v	C424		018-11820-10	Cap 0603 8p2 50v NPO±0.1p
C211		018-16100-00	Cap 0603 100n 16v x7r + - 10%	C362		015-22120-20	Cap Cer 0805 12p +-5% NPO 200v	C425		018-12180-10	Cap 0603 18p 50v NPO ±1%
C212		015-07470-20	CAP Cer 1206 4u7 10% 25V X7R	C363		015-22120-20	Cap Cer 0805 12p +-5% NPO 200v	C426		018-16100-00	Cap 0603 100n 16v x7r + - 10%
C213		018-16100-00	Cap 0603 100n 16v x7r + - 10%	C364		018-12180-10	Cap 0603 18p 50v NPO ±1%	C427		018-13180-00	Cap 0603 180p 50v NPO±5%
C214		018-16100-00	Cap 0603 100n 16v x7r + - 10%	C365		018-14100-00	Cap 0603 1n 50v X7r ±10%	C428		018-13220-00	Cap 0603 220p 50v NPO±5%
C215		018-16100-00	Cap 0603 100n 16v x7r + - 10%	C366		018-12150-10	Cap 0603 15p 50v NPO ±1%	C429		018-13150-00	Cap 0603 150p 50v NPO ±5%
C216		018-16100-00	Cap 0603 100n 16v x7r + - 10%	C369		015-22100-20	Cap Cer 0805 10P +-5% NPO 200v	C430		018-16100-00	Cap 0603 100n 16v x7r + - 10%
C217		018-16100-00	Cap 0603 100n 16v x7r + - 10%	C370		015-21680-20	Cap Cer 0805 6p8+-0.25pf NPO	C431		018-16100-00	Cap 0603 100n 16v x7r + - 10%
C218		018-14100-00	Cap 0603 1n 50v X7r ±10%	C371		015-22100-20	Cap Cer 0805 10P +-5% NPO 200v	C433		018-11390-10	Cap 0603 3p9 50v NPO±0.1p
C219		018-16100-00	Cap 0603 100n 16v x7r + - 10%	C372		015-22120-20	Cap Cer 0805 12p +-5% NPO 200v	C434		018-15100-00	Cap 0603 10n 50v X7r ±10%
C220		018-16100-00	Cap 0603 100n 16v x7r + - 10%	C373		015-22120-20	Cap Cer 0805 12p +-5% NPO 200v	C435		018-13150-00	Cap 0603 150p 50v NPO ±5%
C221		018-16100-00	Cap 0603 100n 16v x7r + - 10%	C374		015-22120-20	Cap Cer 0805 12p +-5% NPO 200v	C436		018-12120-10	Cap 0603 12p 50v NPO ±1%
C222		018-13100-10	Cap 0603 100p 50v NPO±1%	C375		015-22100-20	Cap Cer 0805 10P +-5% NPO 200v	C438		018-11820-10	Cap 0603 8p2 50v NPO±0.1p
C223		018-16100-00	Cap 0603 100n 16v x7r + - 10%	C376		015-22100-20	Cap Cer 0805 10P +-5% NPO 200v	C439		018-12150-10	Cap 0603 15p 50v NPO ±1%
C224		015-27100-08	Cap Cer 0805 X7R 1uF 16V 10%	C377		015-21680-20	Cap Cer 0805 6p8+-0.25pf NPO	C440		018-15100-00	Cap 0603 10n 50v X7r ±10%
C225		018-16100-00	Cap 0603 100n 16v x7r + - 10%	C378		015-21820-20	Cap Cer 0805 8p2+-0.25pf NPO	C441		018-11820-10	Cap 0603 8p2 50v NPO±0.1p
C226		018-16100-00	Cap 0603 100n 16v x7r + - 10%	C379		015-22120-20	Cap Cer 0805 12p +-5% NPO 200v	C442		018-12270-10	Cap 0603 27p 50v NPO ±1%
C227		018-16100-00	Cap 0603 100n 16v x7r + - 10%	C380		015-22120-20	Cap Cer 0805 12p +-5% NPO 200v	C443		018-12270-10	Cap 0603 27p 50v NPO ±1%
C228		015-26100-08	Cap Cer 0805 100n 10% X7r 50v	C381		015-22120-20	Cap Cer 0805 12p +-5% NPO 200v	C444		018-15100-00	Cap 0603 10n 50v X7r ±10%
C231		015-27100-08	Cap Cer 0805 X7R 1uF 16V 10%	C382		015-22100-20	Cap Cer 0805 10P +-5% NPO 200v	C445		018-15100-00	Cap 0603 10n 50v X7r ±10%
C232		015-27100-08	Cap Cer 0805 X7R 1uF 16V 10%	C383		015-22100-20	Cap Cer 0805 10P +-5% NPO 200v	C446		018-15100-00	Cap 0603 10n 50v X7r ±10%
C3003		016-08100-03	Cap Elec SMD 10uF 35V 105/2000	C384		015-22100-20	Cap Cer 0805 10P +-5% NPO 200v	C448		018-13100-10	Cap 0603 100p 50v NPO±1%
C3006		018-13150-00	Cap 0603 150p 50v NPO ±5%	C385		015-21680-20	Cap Cer 0805 6p8+-0.25pf NPO	C449		018-15100-00	Cap 0603 10n 50v X7r ±10%
C300		018-15100-00	Cap 0603 10n 50v X7r ±10%	C386		015-22100-20	Cap Cer 0805 10P +-5% NPO 200v	C450		018-13100-10	Cap 0603 100p 50v NPO±1%
C3017		015-22470-01	Cap Cer 0805 47p 5% NPO 50v	C388		018-14470-00	Cap 0603 4n7 50v X7r±10%	C451		018-12560-10	Cap 0603 56p 50v NPO ±1%
C3018		015-22470-01	Cap Cer 0805 47p 5% NPO 50v	C391		018-16100-00	Cap 0603 100n 16v x7r + - 10%	C453		018-12560-10	Cap 0603 56p 50v NPO ±1%
C3019		018-16100-00	Cap 0603 100n 16v x7r + - 10%	C392		018-16100-00	Cap 0603 100n 16v x7r + - 10%	C454		018-13180-00	Cap 0603 180p 50v NPO±5%
C301		018-15100-00	Cap 0603 10n 50v X7r ±10%	C393		018-16100-00	Cap 0603 100n 16v x7r + - 10%	C455		018-15100-00	Cap 0603 10n 50v X7r ±10%
C302		018-15100-00	Cap 0603 10n 50v X7r ±10%	C394		018-15470-00	Cap 0603 47n 16v X7r±10%	C456		018-11680-10	Cap 0603 6p8 50v NPO±0.1p
C3034		015-21120-20	Cap Cer 0805 1p2+-0.25 NPO200v	C396A		015-22560-05	Cap 0805 56p 1% 200v	C457		018-16100-00	Cap 0603 100n 16v x7r + - 10%
C3035		018-14100-00	Cap 0603 1n 50v X7r ±10%	C396B		015-22560-05	Cap 0805 56p 1% 200v	C458		018-16100-00	Cap 0603 100n 16v x7r + - 10%
C303		018-13150-00	Cap 0603 150p 50v NPO ±5%	C396C		015-22560-05	Cap 0805 56p 1% 200v	C459		018-16100-00	Cap 0603 100n 16v x7r + - 10%
C304		018-11120-10	Cap 0603 1p2 50v NPO±0.1p	C397A		015-22560-05	Cap 0805 56p 1% 200v	C460		018-16100-00	Cap 0603 100n 16v x7r + - 10%
C305		018-16100-00	Cap 0603 100n 16v x7r + - 10%	C397B		015-22560-05	Cap 0805 56p 1% 200v	C462		018-11560-10	Cap 0603 5p6 50v NPO±0.1p
C3064		015-22330-05	Cap Cer 0805 33p+-0.1pf 200v	C397C		015-22560-05	Cap 0805 56p 1% 200v	C463		018-16100-00	Cap 0603 100n 16v x7r + - 10%
C3065		015-22270-05	Cap Cer 0805 27p+-0.1pf 200v	C398M		015-03100-07	Cap Cer 1111 100p 5% 500VC17CF	C464		018-13150-00	Cap 0603 150p 50v NPO ±5%
C3066		015-22680-01	Cap Cer 0805 68p 5% NPO 50v	C398T		015-03150-07	Cap Cer 1111 150p 5% 300VC17CF	C465		018-13150-00	Cap 0603 150p 50v NPO ±5%
C3068		015-23100-01	Cap Cer 0805 100p 5% NPO 50v	C399C		015-22150-20	Cap Cer 0805 15p +-5% NPO 200v	C466		018-13270-00	Cap 0603 270p 50v NPO±5%
C306		018-15100-00	Cap 0603 10n 50v X7r ±10%	C399D		015-22120-20	Cap Cer 0805 12p +-5% NPO 200v	C467		018-12100-10	Cap 0603 10p 50v NPO±0.1
C307		018-14100-00	Cap 0603 1n 50v X7r ±10%	C399E		015-22100-20	Cap Cer 0805 10P +-5% NPO 200v	C468		018-11220-10	Cap 0603 2p2 50v NPO±0.1p
C308		018-13470-00	Cap 0603 470p 50v X7r±10%	C399F		015-22100-20	Cap Cer 0805 10P +-5% NPO 200v	C470		018-16100-00	Cap 0603 100n 16v x7r + - 10%
C310		018-14100-00	Cap 0603 1n 50v X7r ±10%	C4000		018-15100-00	Cap 0603 10n 50v X7r ±10%	C471		018-15100-00	Cap 0603 10n 50v X7r ±10%
C311		018-13270-00	Cap 0603 270p 50v NPO±5%	C4002		018-12100-10	Cap 0603 10p 50v NPO±0.1	C472		018-16100-00	Cap 0603 100n 16v x7r + - 10%
C312		018-15100-00	Cap 0603 10n 50v X7r ±10%	C4003		018-16100-00	Cap 0603 100n 16v x7r + - 10%	C473		018-16100-00	Cap 0603 100n 16v x7r + - 10%
C313		018-15100-00	Cap 0603 10n 50v X7r ±10%	C4005		018-12100-10	Cap 0603 10p 50v NPO±0.1	C474		018-16100-00	Cap 0603 100n 16v x7r + - 10%
C314		018-12270-10	Cap 0603 27p 50v NPO ±1%	C4006		018-14100-00	Cap 0603 1n 50v X7r ±10%	C476		015-27100-08	Cap Cer 0805 X7R 1uF 16V 10%
C315		018-13150-00	Cap 0603 150p 50v NPO ±5%	C4007		018-14100-00	Cap 0603 1n 50v X7r ±10%	C5000		018-16100-00	Cap 0603 100n 16v x7r + - 10%
C316		018-15100-00	Cap 0603 10n 50v X7r ±10%	C4008		018-14100-00	Cap 0603 1n 50v X7r ±10%	C5001		018-16100-00	Cap 0603 100n 16v x7r + - 10%
C318		015-24100-08	Cap Cer 0805 1n 10% X7r 50v	C4009		018-11100-10	Cap 0603 1p0 50v NPO±0.1p	C5002		018-11100-10	Cap 0603 1p0 50v NPO±0.1p
C319		018-12100-10	Cap 0603 10p 50v NPO±0.1	C400		018-12100-10	Cap 0603 10p 50v NPO±0.1	C5003		018-13470-00	Cap 0603 470p 50v X7r±10%
C322		018-14100-00	Cap 0603 1n 50v X7r ±10%	C4010		018-12470-10	Cap 0603 47p 50v NPO ±1%	C5004		018-11220-10	Cap 0603 2p2 50v NPO±0.1p
C323		018-16100-00	Cap 0603 100n 16v x7r + - 10%	C4011		018-13220-00	Cap 0603 220p 50v NPO±5%	C5006		018-14100-00	Cap 0603 1n 50v X7r ±10%
C324		018-13470-00	Cap 0603 470p 50v X7r±10%	C4012		018-16100-00	Cap 0603 100n 16v x7r + - 10%	C5008		018-14100-00	Cap 0603 1n 50v X7r ±10%
C325		015-26100-08	Cap Cer 0805 100n 10% X7r 50v	C4015		018-13270-00	Cap 0603 270p 50v NPO±5%	C5009		018-11560-10	Cap 0603 5p6 50v NPO±0.1p
C326		015-24100-08	Cap Cer 0805 1n 10% X7r 50v	C4016		018-15470-00	Cap 0603 47n 16v X7r±10%	C500		018-15470-00	Cap 0603 47n 16v X7r±10%
C327		015-24100-08	Cap Cer 0805 1n 10% X7r 50v	C4017		018-13100-10	Cap 0603 100p 50v NPO±1%	C5011		018-14100-00	Cap 0603 1n 50v X7r ±10%
C335		018-13150-00	Cap 0603 150p 50v NPO ±5%	C401		018-12180-10	Cap 0603 18p 50v NPO ±1%	C5012		018-13150-00	Cap 0603 150p 50v NPO ±5%
C337		015-24100-08	Cap Cer 0805 1n 10% X7r 50v	C4030		018-14100-00	Cap 0603 1n 50v X7r ±10%	C5013		018-14100-00	Cap 0603 1n 50v X7r ±10%
C338		018-14100-00	Cap 0603 1n 50v X7r ±10%	C403		018-13150-00	Cap 0603 150p 50v NPO ±5%	C5014		018-14100-00	Cap 0603 1n 50v X7r ±10%
C339		018-14100-00	Cap 0603 1n 50v X7r ±10%	C404		018-15100-00	Cap 0603 10n 50v X7r ±10%	C5016		018-14100-00	Cap 0603 1n 50v X7r ±10%
C340		018-14100-00	Cap 0603 1n 50v X7r ±10%	C405		018-12100-10	Cap 0603 10p 50v NPO±0.1	C5017		018-14100-00	Cap 0603 1n 50v X7r ±10%
C341		018-13220-00	Cap 0603 220p 50v NPO±5%	C408		018-13120-10	Cap 0603 120p 50v NPO±1%	C5018		018-14100-00	Cap 0603 1n 50v X7r ±10%
C342		018-13220-00	Cap 0603 220p 50v NPO±5%	C409		018-15100-00	Cap 0603 10n 50v X7r ±10%	C501		018-16100-00	Cap 0603 100n 16v x7r + - 10%
C343		018-1322									

Parts List

Ref	Var	IPN	Description	Ref	Var	IPN	Description	Ref	Var	IPN	Description	Ref	Var	IPN	Description
C507		018-15100-00	Cap 0603 10n 50v X7r ±10%	C621		018-16100-00	Cap 0603 100n 16v x7r + - 10%	D707		001-10070-01	Diode BAV70W Dual Ss SOT323	L404		057-10010-20	Ind 0603 Blm11-B102s 0.1a
C5085		015-06100-01	Cap Cer 1206 100n 5% C0G 25V	C622		018-16100-00	Cap 0603 100n 16v x7r + - 10%	D708		001-10070-01	Diode BAV70W Dual Ss SOT323	L405		057-10010-20	Ind 0603 Blm11-B102s 0.1a
C5086		015-06100-01	Cap Cer 1206 100n 5% C0G 25V	C623		014-07470-11	Cap Tant SMD 4u7 10V 20% 0603	D709		001-10099-01	Diode BAV99w Dual Ss	L406		059-76330-85	Ind SMD 1008 330nh 5% Swi C
C5087		015-06100-01	Cap Cer 1206 100n 5% C0G 25V	C700		018-13100-10	Cap 0603 100p 50v NPO±1%	D710		001-10070-01	Diode BAV70W Dual Ss SOT323	L407		057-00056-10	Ind Fxd 56nh +-5% 1206
C5088		015-06100-01	Cap Cer 1206 100n 5% C0G 25V	C701		018-13100-10	Cap 0603 100p 50v NPO±1%	D711		001-10070-01	Diode BAV70W Dual Ss SOT323	L408		057-10010-20	Ind 0603 Blm11-B102s 0.1a
C5089		015-05680-01	Cap Cer 1206 68n 5% C0G 50V	C702		018-13100-10	Cap 0603 100p 50v NPO±1%	D712		001-10099-01	Diode BAV99w Dual Ss	L409		057-00056-10	Ind Fxd 56nh +-5% 1206
C508		018-13150-00	Cap 0603 150p 50v NPO ±5%	C703		018-13100-10	Cap 0603 100p 50v NPO±1%	D713		001-10099-01	Diode BAV99w Dual Ss	L411		056-77150-50	Ind SMD 0805 1.5uh 10% Ebl
C509		018-15100-00	Cap 0603 10n 50v X7r ±10%	C704		018-14100-00	Cap 0603 1n 50v X7r ±10%	D714		001-10099-01	Diode BAV99w Dual Ss	L412		056-77150-50	Ind SMD 0805 1.5uh 10% Ebl
C510		018-15100-00	Cap 0603 10n 50v X7r ±10%	C705		018-14100-00	Cap 0603 1n 50v X7r ±10%	D715		001-10070-01	Diode BAV70W Dual Ss SOT323	L413		059-76820-82	Ind SMD 1008 820nh 2% Swi C
C511		018-12390-10	Cap 0603 39p 50v NPO ±1%	C706		018-15100-00	Cap 0603 10n 50v X7r ±10%	D716		001-10099-01	Diode BAV99w Dual Ss	L414		057-10010-20	Ind 0603 Blm11-B102s 0.1a
C512		018-12120-10	Cap 0603 12p 50v NPO ±1%	C707		018-16100-00	Cap 0603 100n 16v x7r + - 10%	D717		001-10099-01	Diode BAV99w Dual Ss	L415		059-17470-15	Ind SMD 1008cs 4.7uh 2%
C513		018-13150-00	Cap 0603 150p 50v NPO ±5%	C708		018-15100-00	Cap 0603 10n 50v X7r ±10%	D718		001-10099-01	Diode BAV99w Dual Ss	L417		059-17470-15	Ind SMD 1008cs 4.7uh 2%
C514		018-12470-10	Cap 0603 47p 50v NPO ±1%	C709		018-15100-00	Cap 0603 10n 50v X7r ±10%	D719		001-10099-01	Diode BAV99w Dual Ss	L419		057-10010-20	Ind 0603 Blm11-B102s 0.1a
C516		018-16100-00	Cap 0603 100n 16v x7r + - 10%	C710		018-13470-00	Cap 0603 470p 50v X7r±10%	D720		001-10099-01	Diode BAV99w Dual Ss	L5000		059-16820-10	Ind SMD 1008cs 820nh 5%
C517		018-16100-00	Cap 0603 100n 16v x7r + - 10%	C711		018-13470-00	Cap 0603 470p 50v X7r±10%	D721		001-10084-62	Diode SMD BZX84C6V2 Zen SOT23	L5001		059-15680-15	Ind SMD 1008cs 68nh 2%
C518		018-12100-10	Cap 0603 10p 50v NPO±0.1	C712		018-13470-00	Cap 0603 470p 50v X7r±10%	D722		001-10099-01	Diode BAV99w Dual Ss	L5002		059-15047-00	Ind SMD 0603cs 4n7xj
C519		018-13150-00	Cap 0603 150p 50v NPO ±5%	C713		018-13470-00	Cap 0603 470p 50v X7r±10%	D723		001-10099-01	Diode BAV99w Dual Ss	L5003		059-15047-00	Ind SMD 0603cs 4n7xj
C520		018-52220-02	Cap 0603 22p 50v Ntc ±2% T2h	C714		018-16100-00	Cap 0603 100n 16v x7r + - 10%	D724		001-10084-33	Diode SMD BZX84C3V3 Zen SOT23	L5005		059-16820-10	Ind SMD 1008cs 820nh 5%
C522		018-12270-10	Cap 0603 27p 50v NPO ±1%	C715		015-26100-08	Cap Cer 0805 100n 10% X7r 50v	D725		001-10070-01	Diode BAV70W Dual Ss SOT323	L5006		059-16120-00	Ind SMD 0603hs 120nh 5%
C523		018-12270-10	Cap 0603 27p 50v NPO ±1%	C717		018-12270-00	Cap 0603 100n 16v x7r + - 10%	D726		001-10099-01	Diode BAV99w Dual Ss	L5007		057-10010-20	Ind 0603 Blm11-B102s 0.1a
C524		018-12150-10	Cap 0603 15p 50v NPO ±1%	C718		018-16100-00	Cap 0603 100n 16v x7r + - 10%	DIG_BCAN		319-01258-00	Shld Can Dgtl TMA	L5008		057-10010-20	Ind 0603 Blm11-B102s 0.1a
C525		018-13150-00	Cap 0603 150p 50v NPO ±5%	C719		018-15100-00	Cap 0603 10n 50v X7r ±10%	DIG_TCAN		319-01258-00	Shld Can Dgtl TMA	L500		059-17470-15	Ind SMD 1008cs 4.7uh 2%
C526		018-15100-00	Cap 0603 10n 50v X7r ±10%	C720		018-15100-00	Cap 0603 10n 50v X7r ±10%	DIRC_TOP		319-01255-00	Shld Can Direc-Coup TMA	L501		159-77220-35	Ind SMD 0603 2.2uh 10% Smi F
C527		018-15330-00	Cap 0603 33n 50v X7r10%	C721		018-15100-00	Cap 0603 10n 50v X7r ±10%	FCL_TOP		319-01257-00	Shld Can Frt End TMA	L502		050-10000-40	Coil SMD DC/DC Convt
C528		018-16100-00	Cap 0603 100n 16v x7r + - 10%	C722		018-16100-00	Cap 0603 100n 16v x7r + - 10%	FE_TOP		319-01257-00	Shld Can Frt End TMA	L503		059-17470-15	Ind SMD 1008cs 4.7uh 2%
C529		018-16100-00	Cap 0603 100n 16v x7r + - 10%	C723		018-13470-00	Cap 0603 470p 50v X7r±10%	H5300		316-85137-01	Plate Copper Heat TMA	L504		059-17470-15	Ind SMD 1008cs 4.7uh 2%
C530		018-15100-00	Cap 0603 10n 50v X7r ±10%	C724		018-13470-00	Cap 0603 470p 50v X7r±10%	IC200		002-15468-23	IC DPOT MAX5468 10K 32-T SOT23	L505		059-17820-10	Ind SMD 1008Is 8.2uh 5%
C531		015-07470-20	CAP Cer 1206 4u7 10% 25V X7R	C725		018-13470-00	Cap 0603 470p 50v X7r±10%	IC201		002-20103-24	IC BA10324 4x Op Amp Ssop-14	L506		057-10010-20	Ind 0603 Blm11-B102s 0.1a
C532		018-12330-10	Cap 0603 33p 50v NPO ±1%	C726		018-13470-00	Cap 0603 470p 50v X7r±10%	IC202		002-10151-90	IC SMD TDA1519C 2x11w Aud Pwr	L507		059-15330-00	Ind Fxd 0603hs 33nh 5%
C533		018-16100-00	Cap 0603 100n 16v x7r + - 10%	C727		018-13470-00	Cap 0603 470p 50v X7r±10%	IC203		002-16236-70	IC M62367GP 8bit 8ch D-A Ssop	L510		057-10010-20	Ind 0603 Blm11-B102s 0.1a
C534		018-13330-00	Cap 0603 330p 50v X7r±10%	C728		018-13470-00	Cap 0603 470p 50v X7r±10%	IC204		002-10065-21	IC AD6521ACA Dual Codec	L522		059-15390-00	Ind SMD 0603hs 39nh 5%
C535		018-16100-00	Cap 0603 100n 16v x7r + - 10%	C729		018-13470-00	Cap 0603 470p 50v X7r±10%	IC205		002-10045-50	IC SMD AK4550VT Codec Tssop-16	L600		057-10600-05	Ind 0603 Blm11p600s .5a F/Bead
C536		018-15100-00	Cap 0603 10n 50v X7r ±10%	C730		018-13470-00	Cap 0603 470p 50v X7r±10%	IC301		002-20103-24	IC BA10324 4x Op Amp Ssop-14	L601		057-10100-65	Ind SMD Pwr Cdrh6D38 100UH .65
C537		018-14100-00	Cap 0603 1n 50v X7r ±10%	C731		018-13470-00	Cap 0603 470p 50v X7r±10%	IC303		002-20103-24	IC BA10324 4x Op Amp Ssop-14	L602		057-10010-45	Ind SMD Pwr CDRH2D18 10UH .43A
C538		018-16100-00	Cap 0603 100n 16v x7r + - 10%	C732		018-13470-00	Cap 0603 470p 50v X7r±10%	IC400		002-10966-70	IC SMD RF9667 QUAD DEMOD QFN20	L700		057-10010-20	Ind 0603 Blm11-B102s 0.1a
C539		018-16100-00	Cap 0603 100n 16v x7r + - 10%	C733		015-26100-08	Cap Cer 0805 100n 10% X7r 50v	IC403		002-10160-10	IC SMD LMX1601 Dual Pll Tssop	L701		057-10010-20	Ind 0603 Blm11-B102s 0.1a
C540		018-16100-00	Cap 0603 100n 16v x7r + - 10%	CDC_BOT		319-01208-02	Shld Synth/lf T/Orc	IC500		002-74910-41	IC SMD 74V1G04 Inverter SC70	L702		057-10010-20	Ind 0603 Blm11-B102s 0.1a
C541		018-15100-00	Cap 0603 10n 50v X7r ±10%	CDC_TOP		319-01208-02	Shld Synth/lf T/Orc	IC501		002-74916-60	IC SMD 74HC1G66 Bilat Sw Sc70	L703		057-10010-20	Ind 0603 Blm11-B102s 0.1a
C542		018-16100-00	Cap 0603 100n 16v x7r + - 10%	D301		001-10099-01	Diode BAV99w Dual Ss	IC502		002-10072-20	IC LMV722 2XOPAMP L/Noise Msop	L704		057-10010-20	Ind 0603 Blm11-B102s 0.1a
C543		018-16100-00	Cap 0603 100n 16v x7r + - 10%	D303		001-10841-10	Diode SMD BZX84C11v ZEN SOT23	IC503		002-14111-00	IC SMD ADF4111BRU PLL Tssop16	L706		057-10010-20	Ind 0603 Blm11-B102s 0.1a
C544		015-27100-08	Cap Cer 0805 X7R 1uF 16V 10%	D304		001-10070-07	Diode BAS70-07w Dualsch SOT343	IC504		002-10040-66	IC MC14066 2x Bilat Sw S014	L707		057-10010-20	Ind 0603 Blm11-B102s 0.1a
C545		018-12180-10	Cap 0603 18p 50v NPO ±1%	D305		001-10070-07	Diode BAS70-07w Dualsch SOT343	IC505		002-10227-21	IC SMD TLC2272CPW 0-amp	L708		057-10010-20	Ind 0603 Blm11-B102s 0.1a
C546		018-16100-00	Cap 0603 100n 16v x7r + - 10%	D307		001-10012-50	Diode SMD MA4P1250 Pin3x2mm	IC600		002-13823-33	IC TPS3823-33 3V3 Reset/Wdt	L709		057-10010-20	Ind 0603 Blm11-B102s 0.1a
C549		018-12150-10	Cap 0603 15p 50v NPO ±1%	D310		001-10012-50	Diode SMD MA4P1250 Pin3x2mm	IC601		002-10009-00	IC Lf90CPT V/LO DROP OUT 9VREG	L711		057-10010-20	Ind 0603 Blm11-B102s 0.1a
C550		015-07470-20	CAP Cer 1206 4u7 10% 25V X7R	D311		001-10070-01	Diode BAV70W Dual Ss SOT323	IC602		002-12674-33	IC SMD LM2674 3V3 .5a SmPs S08	LK1		036-10000-00	Res M/F SMD 0805 0e 0.125w
C551		018-13150-00	Cap 0603 150p 50v NPO ±5%	D4000		001-10017-06	Diode SMD BAT17-06W SOT323	IC603		002-10792-30	IC TPS79230 3VO LDD 100mA Reg	LK2		036-10000-00	Res M/F SMD 0805 0e 0.125w
C554		018-12180-10	Cap 0603 18p 50v NPO ±1%	D4001		001-10017-06	Diode SMD BAT17-06W SOT323	IC604		002-10792-25	IC TPS79225 2V5 LDD 100mA Reg	LK3		036-10000-00	Res M/F SMD 0805 0e 0.125w
C555		018-15150-00	Cap 0603 15n 50v X7r ±10%	D4002		001-10000-18	Diode SMD BAT18 S-Sw SOT23	IC605		000-10511-00	Xstr SMD IP5511S MOSFET Switch	LK5		036-10000-00	Res M/F SMD 0805 0e 0.125w
C556		018-13150-00	Cap 0603 150p 50v NPO ±5%	D4003		001-10056-01	Diode BAW56W Dual Ss SOT323	IC606		002-11126-00	IC Smd LK112M60TR 6V 150mA Reg	LK7		036-10000-00	Res M/F SMD 0805 0e 0.125w
C558		018-13150-00	Cap 0603 150p 50v NPO ±5%	D4004		001-10056-01	Diode BAW56W Dual Ss SOT323	IF_TOP		319-01256-00	Shld Can If TMA	LO2_BOT		319-01210-00	Shld Low Pass Fltr T/Orc
C562		018-13150-00	Cap 0603 150p 50v NPO ±5%	D400		001-10099-01	Diode BAV99w Dual Ss	L100		057-10010-20	Ind 0603 Blm11-B102s 0.1a	LPF_TOP		319-01251-00	Shld Can Lpf TMA
C565		015-06100-01	Cap Cer 1206 100n 5% C0G 25V	D401		001-10066-05	Diode SMD BBY66-05W Vcap SC-70	L101		057-10010-20	Ind 0603 Blm11-B102s 0.1a	MCM1		XMABP30	Rmb TMA 40x41 EP1C12x5509
C566		018-13150-00	Cap 0603 150p 50v NPO ±5%	D402		001-10066-05	Diode SMD BBY66-05W Vcap SC-70	L102		057-10010-20	Ind 0603 Blm11-B102s 0.1a	NB_BOT		319-01215-01	Shld Frt End T/Orc
C579		015-07470-20	CAP Cer 1206 4u7 10% 25V X7R	D403		001-10066-05	Diode SMD BBY66-05W Vcap SC-70	L104		057-10081-06	Ind 1806 Blm41p750s Emi Supr	PAD_TOP		319-01254-00	Shld Can Paf TMA
C583		018-12150-10	Cap 0603 15p 50v NPO ±1%	D404		001-10066-05	Diode SMD BBY66-05W Vcap SC-70	L200		057-10010-20	Ind 0603 Blm11-B102s 0.1a	PAF_TOP		319-01253-00	Shld Can Paf TMA
C584		018-12120-10	Cap 0603 12p 50v NPO ±1%	D405		001-10015-00	Diode SMD BAT15-099R Sch	L300		059-16270-00	Ind SMD 0603cs 270nh 5%	PIN_TOP		319-01252-00	Shld Can Pin Sw TMA
C585		015-07470-20	CAP Cer 1206 4u7 10% 25V X7R	D5000		001-10006-39	Diode SMD BB639 Vcap SOD323	L302		059-15220-00	Ind SMD 0603hs 22nh 5%	PL100		240-00027-01	Conn 4way Power Male TMA
C587		018-12150-10	Cap 0603 15p 50v NPO ±1%	D5001		001-10006-39	Diode SMD BB639 Vcap SOD323	L303		052-57423-70					

Parts List

Ref	Var	IPN	Description	Ref	Var	IPN	Description	Ref	Var	IPN	Description	Ref	Var	IPN	Description
Q4005		000-10000-50	Xstr SMD UMX5N Dual NPN SOT363	R228		038-15100-10	Res 0603 10k 1/10w 1%	R347		038-16100-10	Res 0603 100k 1/10w 1%	R4034		038-14560-00	Res 0603 5k6 1/10w 5%
Q4006		000-10084-62	Xstr BC846S Dual SOT363 NPN	R229		038-15470-10	Res 0603 47k 1/10w 1%	R350		038-14470-00	Res 0603 4k7 1/10w 5%	R4035		038-14100-10	Res 0603 1k0 1/10w 1%
Q4007		000-10084-73	Xstr BC847BPNNPN/PNP SOT363	R230		038-15470-10	Res 0603 47k 1/10w 1%	R353		038-16100-10	Res 0603 100k 1/10w 1%	R4036		038-10000-00	Res 0603 Zero Ohm 1/16w ± 5%
Q400		000-10085-70	Xstr BC856 PNP Dual SOT363	R231		038-14120-10	Res 0603 1k2 1/10w 1%	R354		038-13100-10	Res 0603 100R 1/10w 1%	R4037		038-14470-00	Res 0603 4k7 1/10w 5%
Q401		000-10036-00	Xstr SMD BFR360F NPN Lo Noise	R232		038-15470-10	Res 0603 47k 1/10w 1%	R355		036-03110-10	Res 2512 10r 5% 1w	R4038		038-15120-10	Res 0603 12k 1/10w 1%
Q402		000-10084-71	Xstr BC847BW NPN SOT323	R233		038-15470-10	Res 0603 47k 1/10w 1%	R356		038-13100-10	Res 0603 100R 1/10w 1%	R4039		038-15560-10	Res 0603 56k 1%
Q403		000-10001-71	Xstr RF BFS17W NPN SOT323UHF	R234		038-15470-10	Res 0603 47k 1/10w 1%	R357		038-15100-10	Res 0603 10k 1/10w 1%	R403		038-14100-10	Res 0603 1k0 1/10w 1%
Q404		000-10036-00	Xstr SMD BFR360F NPN Lo Noise	R235		038-15470-10	Res 0603 47k 1/10w 1%	R360		038-16100-10	Res 0603 100k 1/10w 1%	R4040		038-16100-10	Res 0603 100k 1/10w 1%
Q405		000-10000-90	Xstr PUMD9 Dual NPN/PNP SOT363	R236		038-14100-10	Res 0603 1k0 1/10w 1%	R361		038-16100-10	Res 0603 100k 1/10w 1%	R404		038-10000-00	Res 0603 Zero Ohm 1/16w ± 5%
Q5000		000-10009-30	Xstr SMD BFR93A NPN SOT23	R238		038-14120-10	Res 0603 1k2 1/10w 1%	R362		038-16820-00	Res 0603 820k 1/10w 5%	R406		038-15470-10	Res 0603 47k 1/10w 1%
Q5001		000-10001-72	Xstr R BFS17S NPN SOT363	R239		038-16100-10	Res 0603 100k 1/10w 1%	R363		038-16820-00	Res 0603 820k 1/10w 5%	R407		038-16330-10	Res 0603 330k 1/10w 1%
Q5002		000-10085-70	Xstr BC856 PNP Dual SOT363	R240		038-16120-10	Res 0603 120k 1%	R364		038-15330-10	Res 0603 33k 1%	R408		038-15100-10	Res 0603 10k 1/10w 1%
Q5003		000-10084-71	Xstr BC847BW NPN SOT323	R241		038-14470-00	Res 0603 4k7 1/10w 5%	R365		038-15100-10	Res 0603 10k 1/10w 1%	R409		038-13470-00	Res 0603 470R 1/10w 5%
Q5004		000-10085-71	Xstr SMD BC857BW PNP SOT323	R242		038-14100-10	Res 0603 1k0 1/10w 1%	R366		038-17100-10	Res 0603 1M 1%	R410		038-12220-00	Res 0603 22e 1/16w ± 5%
Q500		000-10085-71	Xstr SMD BC857BW PNP SOT323	R243		038-15100-10	Res 0603 10k 1/10w 1%	R367		038-17100-10	Res 0603 1M 1%	R411		038-12820-00	Res 0603 82R 1/10w 5%
Q501		000-10001-71	Xstr RF BFS17W NPN SOT323UHF	R245		038-15100-10	Res 0603 10k 1/10w 1%	R368		038-16470-00	Res 0603 470k 1/10w 5%	R412		038-14330-00	Res 0603 3k3 1/10w 5%
Q502		000-10084-71	Xstr BC847BW NPN SOT323	R246		038-15100-10	Res 0603 10k 1/10w 1%	R369		038-16470-00	Res 0603 470k 1/10w 5%	R413		038-14270-00	Res 0603 2k7 1/10w 5%
Q503		000-10001-71	Xstr RF BFS17W NPN SOT323UHF	R247		038-15100-10	Res 0603 10k 1/10w 1%	R370		038-16120-10	Res 0603 120k 1%	R414		038-12150-10	Res 0603 15e 1/16w ± 1%
Q505		000-10084-71	Xstr BC847BW NPN SOT323	R249		038-10000-00	Res 0603 Zero Ohm 1/16w ± 5%	R371		038-16120-10	Res 0603 120k 1%	R415		038-13560-10	Res 0603 560R 1/10w 1%
Q508		000-10084-72	Xstr BC847BS NPN Dual SOT363	R250		038-16100-10	Res 0603 100k 1/10w 1%	R372		038-15470-10	Res 0603 47k 1/10w 1%	R416		038-15220-10	Res 0603 22k 1%
Q511		000-10084-73	Xstr BC847BPNNPN/PNP SOT363	R251		038-10000-00	Res 0603 Zero Ohm 1/16w ± 5%	R373		038-15100-10	Res 0603 10k 1/10w 1%	R417		038-14470-00	Res 0603 4k7 1/10w 5%
Q512		000-10084-71	Xstr BC847BW NPN SOT323	R252		038-12220-00	Res 0603 22e 1/16w ± 5%	R374		038-15470-10	Res 0603 47k 1/10w 1%	R418		038-14680-10	Res 0603 6k8 1/10w 1%
Q600		000-10085-71	Xstr SMD BC857BW PNP SOT323	R253		038-12220-00	Res 0603 22e 1/16w ± 5%	R375		038-15220-10	Res 0603 22k 1%	R419		038-12150-10	Res 0603 15e 1/16w ± 1%
Q601		000-10084-71	Xstr BC847BW NPN SOT323	R3000		038-10000-00	Res 0603 Zero Ohm 1/16w ± 5%	R376		038-15470-10	Res 0603 47k 1/10w 1%	R420		038-14100-10	Res 0603 1k0 1/10w 1%
Q602		000-10084-71	Xstr BC847BW NPN SOT323	R300		036-02680-02	Res 1206 68e 5% 0.25w 200v	R377		038-15100-10	Res 0603 10k 1/10w 1%	R421		038-15100-10	Res 0603 10k 1/10w 1%
Q603		000-10002-05	Xstr SMD BSH205 P Mos SOT23	R3015		036-01240-03	Res 1218 2e4 5% 1W PRC201	R378		038-15470-10	Res 0603 47k 1/10w 1%	R422		038-16100-10	Res 0603 100k 1/10w 1%
Q604		000-10084-71	Xstr BC847BW NPN SOT323	R3016		036-01240-03	Res 1218 2e4 5% 1W PRC201	R379		038-14680-10	Res 0603 6k8 1/10w 1%	R423		038-16100-10	Res 0603 100k 1/10w 1%
Q605		000-10002-05	Xstr SMD BSH205 P Mos SOT23	R3017		036-03150-03	Res 1218 150e 5% 1w PRC201	R380		038-13680-00	Res 0603 680R 1/10w 5%	R424		038-12470-00	Res 0603 47R 1/10w 5%
Q700		000-10085-71	Xstr SMD BC857BW PNP SOT323	R3018		036-03150-03	Res 1218 150e 5% 1w PRC201	R381		038-15470-10	Res 0603 47k 1/10w 1%	R425		038-14220-00	Res 0603 2k2 1/10w 5%
Q701		000-10084-73	Xstr BC847BPNNPN/PNP SOT363	R301		036-11180-10	Res M/F SMD 0805 1e8 1%	R382		038-14470-00	Res 0603 4k7 1/10w 5%	R426		038-14150-00	Res 0603 1k5 1/10w 5%
Q702		000-10084-71	Xstr BC847BW NPN SOT323	R3020		038-12180-00	Res 0603 18e 1/16w ± 5%	R383		038-12390-10	Res 0603 390R 1/10w 1%	R427		038-14150-00	Res 0603 1k5 1/10w 5%
Q703		000-10084-73	Xstr BC847BPNNPN/PNP SOT363	R302		036-11330-00	Res M/F SMD 0805 3e3 5%	R384		038-12390-10	Res 0603 390R 1/10w 1%	R428		038-14150-00	Res 0603 1k5 1/10w 5%
Q704		000-10084-73	Xstr BC847BPNNPN/PNP SOT363	R3034		038-12820-00	Res 0603 82R 1/10w 5%	R385		038-14470-00	Res 0603 4k7 1/10w 5%	R429		038-14562-10	Res 0603 5k62 1/10w 1%
Q705		000-10084-73	Xstr BC847BPNNPN/PNP SOT363	R3035		038-12820-00	Res 0603 82R 1/10w 5%	R386		038-13680-00	Res 0603 680R 1/10w 5%	R430		038-15390-10	Res 0603 39k2 1%
Q706		000-10084-73	Xstr BC847BPNNPN/PNP SOT363	R303		036-02680-02	Res 1206 68e 5% 0.25w 200v	R387		038-14680-10	Res 0603 6k8 1/10w 1%	R431		038-17100-10	Res 0603 1M 1%
Q708		000-10085-71	Xstr SMD BC857BW PNP SOT323	R304		038-12470-00	Res 0603 47R 1/10w 5%	R388		038-15470-10	Res 0603 47k 1/10w 1%	R432		038-17100-10	Res 0603 1M 1%
Q709		000-10085-71	Xstr SMD BC857BW PNP SOT323	R305		036-13220-10	Res M/F SMD 0805 220e 1%	R389		036-03150-07	Res 2010 150e 5% 0.5w	R433		038-14560-00	Res 0603 5k6 1/10w 5%
R100		038-14470-00	Res 0603 4k7 1/10w 5%	R306		038-13330-00	Res 0603 330R 1/10w 5%	R390		036-03150-07	Res 2010 150e 5% 0.5w	R434		038-16100-10	Res 0603 100k 1/10w 1%
R101		038-14470-00	Res 0603 4k7 1/10w 5%	R3070		038-10000-00	Res 0603 Zero Ohm 1/16w ± 5%	R391		038-15470-10	Res 0603 47k 1/10w 1%	R435		038-13560-10	Res 0603 560R 1/10w 1%
R102		038-14220-00	Res 0603 2k2 1/10w 5%	R3071		038-10000-00	Res 0603 Zero Ohm 1/16w ± 5%	R392		038-15330-10	Res 0603 33k 1%	R436		038-14150-00	Res 0603 1k5 1/10w 5%
R103		038-14220-00	Res 0603 2k2 1/10w 5%	R307		036-02680-02	Res 1206 68e 5% 0.25w 200v	R393		038-15100-10	Res 0603 10k 1/10w 1%	R437		038-13680-00	Res 0603 680R 1/10w 5%
R104		038-14220-00	Res 0603 2k2 1/10w 5%	R308		036-12270-00	Res M/F SMD 0805 27e 5%	R395		036-16100-10	Res M/F SMD 0805 100k 1%	R438		038-13680-00	Res 0603 680R 1/10w 5%
R105		038-16100-10	Res 0603 100k 1/10w 1%	R309		038-12470-00	Res 0603 47R 1/10w 5%	R397		038-10000-00	Res 0603 Zero Ohm 1/16w ± 5%	R5000		038-14560-00	Res 0603 5k6 1/10w 5%
R106		038-14470-00	Res 0603 4k7 1/10w 5%	R310		038-13220-10	Res 0603 220R 1/10w 1%	R398		038-15470-10	Res 0603 47k 1/10w 1%	R5001		038-14270-00	Res 0603 2k7 1/10w 5%
R107		038-14470-00	Res 0603 4k7 1/10w 5%	R312		038-10000-00	Res 0603 Zero Ohm 1/16w ± 5%	R399		038-15470-10	Res 0603 47k 1/10w 1%	R5002		038-12560-00	Res 0603 56R 1/10w 5%
R108		038-13680-00	Res 0603 680R 1/10w 5%	R313		038-16100-10	Res 0603 100k 1/10w 1%	R4000		038-13560-10	Res 0603 560R 1/10w 1%	R5003		038-12220-00	Res 0603 22e 1/16w ± 5%
R109		038-13820-00	Res 0603 820R 1/10w 5%	R314		038-15560-10	Res 0603 56k 1%	R4001		038-15560-10	Res 0603 56k 1%	R5004		038-13330-00	Res 0603 330R 1/10w 5%
R110		038-14470-00	Res 0603 4k7 1/10w 5%	R315		038-16100-10	Res 0603 100k 1/10w 1%	R4002		038-15330-10	Res 0603 33k 1%	R5005		038-13100-10	Res 0603 100R 1/10w 1%
R112		038-10000-00	Res 0603 Zero Ohm 1/16w ± 5%	R316		038-13270-10	Res 0603 270R 1/10w 1%	R4003		038-15220-10	Res 0603 22k 1%	R5006		038-14120-10	Res 0603 1k2 1/10w 1%
R199		038-10000-00	Res 0603 Zero Ohm 1/16w ± 5%	R317		038-14180-00	Res 0603 1k8 1/10w 5%	R4004		038-13470-00	Res 0603 470R 1/10w 5%	R5007		038-13820-00	Res 0603 820R 1/10w 5%
R200		038-15470-10	Res 0603 47k 1/10w 1%	R318		038-16220-00	Res 0603 220k 1/10w 5%	R4008		038-15330-10	Res 0603 33k 1%	R5008		038-14100-10	Res 0603 1k0 1/10w 1%
R201		038-15470-10	Res 0603 47k 1/10w 1%	R319		038-12180-00	Res 0603 18e 1/16w ± 5%	R400		038-15100-10	Res 0603 10k 1/10w 1%	R500		038-16100-10	Res 0603 100k 1/10w 1%
R202		038-15470-10	Res 0603 47k 1/10w 1%	R320		036-12820-00	Res M/F SMD 0805 82e 5%	R4010		038-15220-10	Res 0603 22k 1%	R5010		038-15100-10	Res 0603 10k 1/10w 1%
R203		038-15470-10	Res 0603 47k 1/10w 1%	R321		038-15330-10	Res 0603 33k 1%	R4011		038-13470-00	Res 0603 470R 1/10w 5%	R5011		038-15220-10	Res 0603 22k 1%
R204		038-15470-10	Res 0603 47k 1/10w 1%	R322		038-16220-00	Res 0603 220k 1/10w 5%	R4012		038-15270-00	Res 0603 27k 1/10w 5%	R5012		038-14220-00	Res 0603 2k2 1/10w 5%
R205		038-14560-00	Res 0603 5k6 1/10w 5%	R323		038-16100-10	Res 0603 100k 1/10w 1%	R4013		038-15470-10	Res 0603 47k 1/10w 1%	R5014		038-15100-10	Res 0603 10k 1/10w 1%
R206		038-14330-00	Res 0603 3k3 1/10w 5%	R324		038-17100-10	Res 0603 1M 1%	R4014		038-13390-10	Res 0603 390R 1/10w 1%	R5015		038-12270-00	Res 0603 27e 1/16w ± 5%
R207		038-14120-10	Res 0603 1k2 1/10w 1%	R326		038-14100-10	Res 0603 1k0 1/10w 1%	R4015		038-13390-10	Res 0603 390R 1/10w 1%	R5018			

Ref	Var	IPN	Description	Ref	Var	IPN	Description
R510		038-13390-10	Res 0603 390R 1/10w 1%	R628		038-16100-10	Res 0603 100k 1/10w 1%
R511		038-16100-10	Res 0603 100k 1/10w 1%	R629		038-16100-10	Res 0603 100k 1/10w 1%
R512		038-12180-00	Res 0603 18e 1/16w ± 5%	R630		038-15470-10	Res 0603 47k 1/10w 1%
R513		038-10000-00	Res 0603 Zero Ohm 1/16w ± 5%	R700		038-12470-00	Res 0603 47R 1/10w 5%
R514		038-15100-10	Res 0603 10k 1/10w 1%	R701		038-14100-10	Res 0603 1k0 1/10w 1%
R515		038-15100-10	Res 0603 10k 1/10w 1%	R702		038-16100-10	Res 0603 100k 1/10w 1%
R516		038-10000-00	Res 0603 Zero Ohm 1/16w ± 5%	R703		038-15100-10	Res 0603 10k 1/10w 1%
R517		038-15560-10	Res 0603 56k 1%	R704		038-16100-10	Res 0603 100k 1/10w 1%
R518		038-15100-10	Res 0603 10k 1/10w 1%	R705		038-14470-00	Res 0603 4k7 1/10w 5%
R519		038-12470-00	Res 0603 47R 1/10w 5%	R706		038-15470-10	Res 0603 47k 1/10w 1%
R520		038-12470-00	Res 0603 47R 1/10w 5%	R707		038-14470-00	Res 0603 4k7 1/10w 5%
R521		038-15100-10	Res 0603 10k 1/10w 1%	R708		038-15220-10	Res 0603 22k 1%
R522		038-12560-00	Res 0603 56R 1/10w 5%	R709		038-15470-10	Res 0603 47k 1/10w 1%
R523		038-16100-10	Res 0603 100k 1/10w 1%	R710		038-15470-10	Res 0603 47k 1/10w 1%
R524		038-15560-10	Res 0603 56k 1%	R711		038-15470-10	Res 0603 47k 1/10w 1%
R525		038-12470-00	Res 0603 47R 1/10w 5%	R712		038-14470-00	Res 0603 4k7 1/10w 5%
R526		038-14100-10	Res 0603 1k0 1/10w 1%	R713		038-15330-10	Res 0603 33k 1%
R527		038-15330-10	Res 0603 33k 1%	R714		038-12560-00	Res 0603 56R 1/10w 5%
R528		038-13470-00	Res 0603 470R 1/10w 5%	R715		038-13820-00	Res 0603 820R 1/10w 5%
R529		038-16100-10	Res 0603 100k 1/10w 1%	R716		038-15100-10	Res 0603 10k 1/10w 1%
R530		038-13100-10	Res 0603 100R 1/10w 1%	R717		038-15470-10	Res 0603 47k 1/10w 1%
R531		038-13820-00	Res 0603 820R 1/10w 5%	R718		038-15100-10	Res 0603 10k 1/10w 1%
R532		038-14100-10	Res 0603 1k0 1/10w 1%	R719		038-14560-00	Res 0603 5k6 1/10w 5%
R533		038-12220-00	Res 0603 22e 1/16w ± 5%	R720		038-15100-10	Res 0603 10k 1/10w 1%
R534		038-15100-10	Res 0603 10k 1/10w 1%	R721		038-15470-10	Res 0603 47k 1/10w 1%
R535		038-15100-10	Res 0603 10k 1/10w 1%	R722		038-13560-10	Res 0603 560R 1/10w 1%
R536		038-16100-10	Res 0603 100k 1/10w 1%	R723		038-15330-10	Res 0603 33k 1%
R537		038-16105-10	Res 0603 105k 1/10w 1%	R724		038-15330-10	Res 0603 33k 1%
R538		038-16100-10	Res 0603 100k 1/10w 1%	R725		038-15330-10	Res 0603 33k 1%
R539		038-15100-10	Res 0603 10k 1/10w 1%	R726		038-15330-10	Res 0603 33k 1%
R540		038-12470-00	Res 0603 47R 1/10w 5%	R727		038-15330-10	Res 0603 33k 1%
R541		038-13560-10	Res 0603 560R 1/10w 1%	R728		038-15330-10	Res 0603 33k 1%
R542		038-10000-00	Res 0603 Zero Ohm 1/16w ± 5%	R729		038-15330-10	Res 0603 33k 1%
R543		038-12470-00	Res 0603 47R 1/10w 5%	R730		038-15330-10	Res 0603 33k 1%
R544		038-12470-00	Res 0603 47R 1/10w 5%	R731		038-14100-10	Res 0603 1k0 1/10w 1%
R545		038-15180-00	Res 0603 18k 1/10w 5%	R732		038-14100-10	Res 0603 1k0 1/10w 1%
R546		038-15180-00	Res 0603 18k 1/10w 5%	R733		038-14100-10	Res 0603 1k0 1/10w 1%
R547		038-13270-10	Res 0603 270R 1/10w 1%	R734		038-14100-10	Res 0603 1k0 1/10w 1%
R548		038-12220-00	Res 0603 22e 1/16w ± 5%	R735		038-14100-10	Res 0603 1k0 1/10w 1%
R549		038-12220-00	Res 0603 22e 1/16w ± 5%	R736		038-14100-10	Res 0603 1k0 1/10w 1%
R550		038-15180-00	Res 0603 18k 1/10w 5%	R737		038-14100-10	Res 0603 1k0 1/10w 1%
R551		038-14270-00	Res 0603 2k7 1/10w 5%	R738		038-14100-10	Res 0603 1k0 1/10w 1%
R552		038-15120-10	Res 0603 12k 1/10w 1%	R739		038-14100-10	Res 0603 1k0 1/10w 1%
R554		038-13680-00	Res 0603 680R 1/10w 5%	R740		038-16100-10	Res 0603 100k 1/10w 1%
R555		038-16100-10	Res 0603 100k 1/10w 1%	R741		038-16100-10	Res 0603 100k 1/10w 1%
R556		038-14330-00	Res 0603 3k3 1/10w 5%	R742		038-16100-10	Res 0603 100k 1/10w 1%
R557		038-14220-00	Res 0603 2k2 1/10w 5%	R743		038-14100-10	Res 0603 1k0 1/10w 1%
R560		038-14220-00	Res 0603 2k2 1/10w 5%	R744		038-12470-00	Res 0603 47R 1/10w 5%
R563		038-12330-20	Res 0603 33R0 1/10w 0.5%	R745		038-16100-10	Res 0603 100k 1/10w 1%
R565		038-14180-00	Res 0603 1k8 1/10w 5%	R746		038-15100-10	Res 0603 10k 1/10w 1%
R566		038-15270-20	Res 0603 27k 0.5%	R747		038-10000-00	Res 0603 Zero Ohm 1/16w ± 5%
R568		038-14330-00	Res 0603 3k3 1/10w 5%	R748		038-14470-00	Res 0603 4k7 1/10w 5%
R569		038-16100-10	Res 0603 100k 1/10w 1%	R749		038-14470-00	Res 0603 4k7 1/10w 5%
R570		038-15270-20	Res 0603 27k 0.5%	R750		038-14470-00	Res 0603 4k7 1/10w 5%
R571		038-13390-10	Res 0603 390R 1/10w 1%	R751		038-14470-00	Res 0603 4k7 1/10w 5%
R573		038-12330-20	Res 0603 33R0 1/10w 0.5%	R753		038-14470-00	Res 0603 4k7 1/10w 5%
R594		038-14270-00	Res 0603 2k7 1/10w 5%	R754		038-14470-00	Res 0603 4k7 1/10w 5%
R598		038-14270-00	Res 0603 2k7 1/10w 5%	R755		038-14470-00	Res 0603 4k7 1/10w 5%
R600		038-15330-10	Res 0603 33k 1%	R756		038-14470-00	Res 0603 4k7 1/10w 5%
R601		038-15330-10	Res 0603 33k 1%	R757		038-15470-10	Res 0603 47k 1/10w 1%
R602		038-10000-00	Res 0603 Zero Ohm 1/16w ± 5%	R758		038-15470-10	Res 0603 47k 1/10w 1%
R603		038-14100-10	Res 0603 1k0 1/10w 1%	R759		038-15470-10	Res 0603 47k 1/10w 1%
R604		038-13270-10	Res 0603 270R 1/10w 1%	R760		038-15470-10	Res 0603 47k 1/10w 1%
R605		038-15470-10	Res 0603 47k 1/10w 1%	R761		038-12560-00	Res 0603 56R 1/10w 5%
R607		038-15100-10	Res 0603 10k 1/10w 1%	R762		038-12560-00	Res 0603 56R 1/10w 5%
R610		038-15120-10	Res 0603 12k 1/10w 1%	R763		038-12560-00	Res 0603 56R 1/10w 5%
R611		038-11470-00	Res 0603 4e7 1/16W ± 5%	R764		038-12560-00	Res 0603 56R 1/10w 5%
R612		038-10000-00	Res 0603 Zero Ohm 1/16w ± 5%	R765		038-15470-10	Res 0603 47k 1/10w 1%
R614		038-10000-00	Res 0603 Zero Ohm 1/16w ± 5%	R766		038-15470-10	Res 0603 47k 1/10w 1%
R615		038-15470-10	Res 0603 47k 1/10w 1%	R767		038-15470-10	Res 0603 47k 1/10w 1%
R616		038-15470-10	Res 0603 47k 1/10w 1%	R768		038-10000-00	Res 0603 Zero Ohm 1/16w ± 5%
R617		038-15470-10	Res 0603 47k 1/10w 1%	R769		036-15330-10	Res M/F SMD 0805 33k 1%
R619		038-15470-10	Res 0603 47k 1/10w 1%	R770		036-15330-10	Res M/F SMD 0805 33k 1%
R620		038-16100-10	Res 0603 100k 1/10w 1%	R771		036-15330-10	Res M/F SMD 0805 33k 1%
R624		038-15470-10	Res 0603 47k 1/10w 1%	R772		036-15330-10	Res M/F SMD 0805 33k 1%
R626		038-15470-10	Res 0603 47k 1/10w 1%	R773		038-15330-10	Res 0603 33k 1%
R627		038-15470-10	Res 0603 47k 1/10w 1%	R774		038-15330-10	Res 0603 33k 1%

Ref	Var	IPN	Description
R776		038-15100-10	Res 0603 10k 1/10w 1%
R777		038-13820-00	Res 0603 820R 1/10w 5%
R788		038-13270-10	Res 0603 270R 1/10w 1%
R789		038-14100-10	Res 0603 1k0 1/10w 1%
R790		038-13220-10	Res 0603 220R 1/10w 1%
R792		038-13220-10	Res 0603 220R 1/10w 1%
SK100		240-10006-00	Skt SMD Dual Row Ra 2.54mm
SK101		240-02022-00	Skt Drng 15Way Ra S/Line Fem
SK102		240-10000-11	Conn SMD 18w Skt M/Match
SK103	Mini-UHF	240-00029-00	Conn RF Female Mini UHF TMA
SK103	BNC	240-00028-00	Conn RF Female BNC TMA
SPARE1		036-10000-00	Res M/F SMD 0805 0e 0.125w
SPARE2		036-10000-00	Res M/F SMD 0805 0e 0.125w
SPARE3		036-10000-00	Res M/F SMD 0805 0e 0.125w
SYN_BOT		319-01205-00	Shld Top Side VCO T/Orca
SYN_TOP		319-01208-02	Shld Synth/If T/Orca
T400		050-10061-70	Bal Mxr SMD 617db-1018
T401		050-10061-70	Bal Mxr SMD 617db-1018
VCO_BOT		319-01206-01	Shld Bttm Side VCO T/Orca
VCXO_BOT		319-01257-00	Shld Can Frt End TMA
XF400		276-10000-19	Filtr Xtal 21.4m 13k B/W -E13a
XF401		276-10000-10	Filtr Xtal 21.4m 15k B/W
XL500		539-10011-00	Vctcxo 13.0MHz +-1.5ppm -30+80
XL501		274-10022-00	Xtal 13.0133MHz Hc-49/Sm+30ppm

Grid Reference Index

PCB IPN 220-01700-10

Ref	PCB	Circuit	Ref	PCB	Circuit	Ref	PCB	Circuit	Ref	PCB	Circuit	Ref	PCB	Circuit	Ref	PCB	Circuit	Ref	PCB	Circuit			
1V8	1:N1	1-H7	C312	1:H7	3-C2	C397C	1:D9	3-D6	C436	2:H2	7-C5	C517	1:K6	4-B3	C708	1:F1	6-B2	D702	1:F1	6-D2	IC502	1:J4	4-A6
3V3	1:L6	1-B11	C313	1:H6	3-B2	C397E	1:D8	3-D6	C437	1:D2	7-H7	C518	1:K4	4-G4	C709	1:F1	6-B3			6-E2			4-F4
+9V0_TX	1:D3	3-J1	C314	1:K8	3-D2	C398A	1:D8	3-D7	C438	1:E2	7-H7	C519	1:K6	4-B4	C710	1:F2	6-D3	D703	1:F2	6-E3			4-H5
AGC	1:J2	1-H12	C315	1:D5	3-K3	C398B	1:D8	3-E7	C439	1:E1	7-H8	C520	2:J5	4-D4	C711	1:G2	6-C3	D704	1:F2	6-E2	IC503	1:H5	4-H7
BOTBAD	2:R10	1-A10	C316	1:J6	3-B3	C398C	1:D8	3-D7	C440	1:G3	7-B5	C521	2:J5	4-D4	C712	1:G2	6-J3	D705	2:N7	6-J7	IC504	2:H4	4-A7
BOTFID1	2:A10	1-A11	C318	1:H9	3-E3	C398D	1:D8	3-E7	C441	1:E2	7-H8	C522	2:K4	4-C4	C713	1:F2	6-E3			6-E7			4-G9
BOTFID2	2:P1	1-A12	C319	2:D5	3-J4	C398E	1:D8	3-D7	C442	1:H3	7-C6	C523	2:K4	4-C4	C714	1:G1	6-C5	D706	2:N7	6-J7			4-B7
C1	2:E3	1-E12	C322	1:E4	3-G4	C398F	1:D8	3-E7	C443	1:G3	7-B6	C524	2:J5	4-E4	C715	1:H1	6-C5			6-H7			4-F10
C100	1:J10	1-J1	C323	1:D4	3-K7	C398G	1:C8	3-D7	C444	1:G3	7-C6	C525	2:J5	4-E4	C717	1:R9	6-J6	D707	2:N7	6-G7			4-F9
C101	1:K9	1-J1	C324	1:E4	3-G4	C398H	1:C8	3-E7	C445	1:H2	7-C6	C526	1:J4	4-H4	C718	2:L9	6-C13			6-H7			4-D8
C102	1:J10	1-J2	C325	1:H9	3-F3	C398J	1:C8	3-D7	C446	1:G2	7-B6	C527	1:J4	4-H5	C719	2:M9	6-C11	D708	2:N8	6-G7	IC505	2:H5	4-E9
C103	1:L9	1-J2	C326	1:G8	3-E4	C398K	1:C8	3-D7	C448	1:H2	7-D6	C528	1:J6	4-B4	C720	2:L9	6-B11			6-F7			4-E7
C104	2:N2	1-G4	C327	1:G8	3-D4	C398M	1:C8	3-D7	C449	1:G3	7-B8	C529	1:J4	4-G5	C721	2:M9	6-B11	D709	1:R9	6-K11			5-B3
C105	2:N2	1-G4	C330	1:D9	3-F4	C398N	1:C8	3-E7	C450	1:H3	7-D7	C530	2:J5	4-E5	C722	2:M9	6-B11	D710	1:R9	6-J11	IC600	2:M6	5-G6
C106	2:P2	1-G4	C332	1:D10	3-F5	C398T	1:C8	3-E7	C451	1:E3	7-H10	C531	1:H6	4-B5	C723	1:N10	6-D13	D711	2:P9	6-G11	IC601	1:P8	5-E6
C107	2:M2	1-J5	C333	1:C9	3-E5	C399A	1:C6	3-E8	C452	1:E3	7-J10	C532	1:J4	4-H5	C724	1:N10	6-D13			6-J11	IC602	2:L8	5-D7
C108	2:M2	1-H5	C335	1:J10	3-G5	C399B	1:C6	3-E8	C453	1:E3	7-H10	C533	2:J4	4-E5	C725	1:N10	6-H13	D712	2:R6	6-C2	IC603	2:J3	5-C7
C109	2:M2	1-H5	C336	1:J10	3-G5	C399C	1:C6	3-D8	C454	1:E2	7-H11	C534	1:J4	4-H6	C726	1:P10	6-G13			6-D2	IC604	2:K3	5-B7
C110	2:L2	1-H5	C337	1:C9	3-E5	C399D	1:C6	3-E8	C455	1:H3	7-D7	C535	1:J4	4-A6	C727	1:P10	6-F13	D713	2:N9	6-H12	IC605	2:M8	5-B7
C201	2:N6	2-F3	C338	1:F7	3-C6	C399E	1:C6	3-D8	C456	1:F2	7-H11	C536	1:J6	4-H6	C728	1:P10	6-E13	D714	2:P9	6-G12	IC606	1:F6	5-C4
C202	2:K2	2-H3	C339	1:F7	3-B6	C399F	1:C6	3-E8	C457	1:H3	7-C8	C537	1:H5	4-H6	C729	1:M9	6-K13	D715	2:R9	6-E11	IF_TOP	1:F3	7-A10
C203	1:K2	2-G5	C340	2:G10	3-F6	C399G	1:C5	3-D8	C458	1:H3	7-C8	C538	2:H5	4-D9	C730	1:M9	6-J13			6-F11	L100	1:K5	1-D8
C204	1:N6	2-D3	C341	1:D6	3-C7	C399H	1:C5	3-E8	C459	1:H3	7-C8	C539	1:G5	4-J7	C731	1:N9	6-J13	D716	2:P9	6-F12	L101	1:K5	1-D8
C205	2:M6	2-E4	C342	1:E6	3-B7	C399J	1:C5	3-D9	C460	1:H2	7-C8	C540	1:G5	4-J7	C732	1:F1	6-B3	D717	2:P9	6-E12	L102	1:K4	1-D8
C206	2:K1	2-G4	C343	1:D6	3-C7	C399K	1:C5	3-E9	C462	1:F2	7-H11	C541	1:H5	4-E7	C733	1:F1	6-A7	D718	2:N9	6-D11	L104	1:H1	1-B1
C207	1:R6	2-D4	C344	1:D6	3-B7	C4000	2:B2	7-F8	C463	1:G3	7-E8	C542	1:G5	4-J7	CDC_BOT	2:K2	2-A7	D719	1:F1	6-B1	L200	1:K1	2-E12
C208	2:K2	2-H5	C345	2:D4	3-H7	C4002	2:B3	7-F9	C464	1:H3	7-C8	C543	2:H5	4-B7	CDC_TOP	1:K2	2-A6			6-B2	L300	1:K6	3-E1
C209	1:R6	2-C5	C346	1:D4	3-F9	C4003	2:E2	7-G9	C465	1:H3	7-C8	C544	2:H5	4-E7	D3004	1:A2	3-F11	D720	1:M9	6-K12	L301	1:H6	3-A1
C210	2:K1	2-H5	C347	1:D5	3-E9	C4005	2:B3	7-F9	C466	1:G2	7-B8	C545	2:G6	4-B14	D3005	1:A2	3-F11	D721	1:N9	6-H5	L302	1:K8	3-D2
C211	1:R7	2-C5	C348	1:C5	3-E9	C4006	2:C3	7-C11	C467	1:F3	7-H13	C546	1:H5	4-J8	D3006	1:A2	3-F11	D722	1:L10	6-J12	L303	1:H9	3-E3
C212	2:K1	2-E5	C349	1:C5	3-E9	C4007	2:C2	7-F11	C468	1:F3	7-H12	C548	1:H4	4-G8	D3007	1:A2	3-F11	D723	2:M9	6-J12	L304	1:H8	3-E3
C213	1:J3	2-F7	C350	1:C5	3-D9	C4008	2:C3	7-F11	C469	1:G3	7-D9	C549	2:G5	4-B13	D301	1:D6	3-J12	D724	2:M9	6-D11	L305	1:G8	3-E4
C214	1:K2	2-F8	C353	1:C3	3-E10	C4009	2:C2	7-E11	C470	1:F3	7-H13	C550	2:H5	4-G9			3-K13	D725	2:M9	6-D12	L306	1:G9	3-F3
C215	1:J3	2-F9	C354	1:C3	3-E10	C400	1:C2	7-H2	C471	1:F2	7-J13	C551	1:G6	4-J8	D303	2:H9	3-G5	D726	2:N9	6-D12	L309	1:G10	3-F4
C216	1:J3	2-F9	C355	1:C2	3-D10	C4010	2:D3	7-C11	C472	1:F3	7-K14	C554	2:G6	4-B13	D304	1:D4	3-E9			6-C3	L310	1:C9	3-F5
C217	2:K2	2-G9	C356	1:C3	3-D10	C4011	2:C3	7-F12	C473	1:F3	7-K14	C555	1:G4	4-G9			3-F9			6-D3	L311	1:D9	3-E5
C218	2:J2	2-C9	C357	1:C4	3-C10	C4012	2:C3	7-F12	C474	1:F2	7-J14	C556	1:H4	4-J9	D305	1:C3	3-D10	DIG_BCAN	2:N4	1-A7	L312	1:C8	3-E6
C219	2:K3	2-J10	C358	2:E5	3-H2	C4013	2:D3	7-E13	C476	2:C2	7-J2	C558	1:H4	4-J9			3-C10	DIG_TCAN	1:N4	1-A6	L313	1:D8	3-E7
C220	2:K2	2-J10	C359	1:C2	3-F11	C4014	2:D3	7-F14	C5000	2:F5	4-C7	C562	1:H6	4-H10	D306	2:D4	3-C12	DIRC_TOP	1:C4	3-B14	L314	1:C7	3-E8
C221	1:K2	2-F8	C360	1:B3	3-E11	C4015	2:D3	7-F14	C5001	2:F6	4-D7	C565	1:F4	4-F11	D307	1:B2	3-E11	DRV	1:E3	3-H1	L315	1:C3	3-E10
C222	1:K2	2-C11	C361	1:A4	3-E11	C4016	2:D2	7-C14	C5002	2:E5	4-C8	C566	1:G5	4-J10	D308	1:F7	3-C6	D_TX_INH	1:E4	3-B10	L316	1:B3	3-E11
C223	1:K1	2-D12	C362	1:B4	3-E11	C4017	2:E3	7-E14	C5003	2:F5	4-B8	C579	1:F5	4-G7	D309	1:F6	3-B6	FCL_TOP	1:J5	4-A10	L317	1:A3	3-E11
C224	1:K1	2-D12	C363	1:B4	3-E11	C401	1:C1	7-H2	C5004	2:E5	4-C8	C583	2:F4	4-B13	D310	1:B2	3-G11	FE_TOP	1:D1	7-A9	L319	1:B5	3-E12
C225	1:K1	2-E13	C364	1:B2	3-G11	C402	1:C1	7-H2	C5005	2:E5	4-C9	C584	2:G4	4-C13	D311	2:E4	3-B9	FE_TUNE	1:J2	1-H12	L320	1:B7	3-E13
C226	2:K2	2-G7	C365	1:E6	3-K13	C4030	2:B3	7-F9	C5006	2:F5	4-B9	C585	1:F5	4-H14	D4000	2:C2	7-F10	FIN1	1:E3	3-C8	L321	1:B8	3-E14
C227	1:K4	2-G7	C366	1:B2	3-G11	C403	1:C1	7-H2	C5008	2:G5	4-B10	C587	2:G4	4-B14	D4001	2:B2	7-F10	FIN2	1:E3	3-B10	L322	1:B2	3-H11
C228	1:N7	2-D5	C369	1:A4	3-D11	C404	1:C1	7-J2	C5009	2:F6	4-B10	C600	2:K9	5-E3	D4002	2:D3	7-E13	FWD_PWR	1:D4	3-H8	L325	1:A2	3-G12
C230	2:N6	2-F3	C370	1:A4	3-D11	C405	1:C1	7-H3	C500	1:J2	4-J1	C601	2:N7	5-D3	D4003	2:E2	7-D14	GND	1:D3	3-J1	L4000	2:E2	7-G9
C231	2:M6	2-E4	C371	1:A5	3-D12	C406	1:C2	7-G3	C5010	2:F6	4-B11	C602	2:N6	5-B3			7-D13	HS300	2:E9	3-B13	L4001	2:D3	7-E14
C232	2:N6	2-E3	C372	1:A6	3-D11	C408	1:C1	7-H4	C5011	2:F4	4-D11	C603	2:L7	5-E7			7-C11	IC200	2:N6	2-E3	L400	1:C2	7-G2
C3000	2:D4	3-B11	C373	1:A5	3-D12	C409	2:G2	7-D2	C5012	2:G5	4-B11	C604	1:L8	5-E4	D400	1:B2	7-H1	IC201	2:K1	2-A8	L401	2:F3	7-E2
C3003	1:D9	3-F4	C374	1:A6	3-D12	C410	1:C1	7-H4	C5013	2:G6	4-B11	C605	1:L8	5-E5	D401	1:C2	7-G2			2-H5	L402	1:C1	7-H4
C3006	1:J9	3-C3	C375	1:A5	3-D12	C411	1:C2	7-H4	C5014	2:G5	4-C11	C606	1:N8	5-G5	D402	1:D1	7-H6			2-F11	L403	1:C1	7-H4
C300	1:G6	3-B1	C376	1:A6	3-D12	C412	1:C1	7-H4	C5015	2:G6	4-B11	C608	2:L8	5-E6	D403	1:D2	7-H7			2-E4	L404	1:D2	7-J5
C3014	1:G7	3-E4	C377	1:A7	3-E13	C413	1:C1	7-H4	C5016	2:G5	4-C12	C609	2:J3	5-D6	D404	2:H3	7-C3			2-G3	L405	1:D1	7-J5
C3015	1:G9	3-D4	C378	1:A7	3-E13	C414	2:G3	7-D3	C5017	2:G5	4-C13	C610	2:K3	5-C6	D405	1:D3	7-H9	IC202	1:P7	2-C4	L406	2:G3	7-D3
C3017	1:F8	3-E5	C379	1:A7	3-D12	C415	2:G3	7-C3	C5018	2:G5	4-B13	C611	2:N8	5-G7	D5000	2:F4	4-D10			2-C4	L407	1:D1	7-G6
C3018	1:F8	3-D5	C380	1:A7	3-D12	C416	2:G3	7-D3	C501	1:K6	4-B1	C612	2:L6	5-E7	D5001	2:F4	4-D10	IC203	1:J2	2-D8	L408	2:F3	7-E4
C3019	1:C10	3-F4	C381	1:A8	3-D13	C417	2:G3	7-C3	C502	1:K5	4-B1	C613	2:L7	5-E7	D5002	2:F4	4-D10	IC204	1:K3	2-G10	L409	1:D2	7-G7
C301	1:K7	3-D1	C382	1:A7	3-D13	C418	1:D2	7-J5	C503	2:J4	4-E1	C614	2:J2	5-D7	D5003	2:F4	4-D10	IC205	1:K1	2-D12	L411	1:H3	7-C6
C302	1:K7	3-E1	C383	1:A8	3-D13	C419	1:D2	7-J5	C504	1:J2	4-J1	C615											

Grid Reference Index

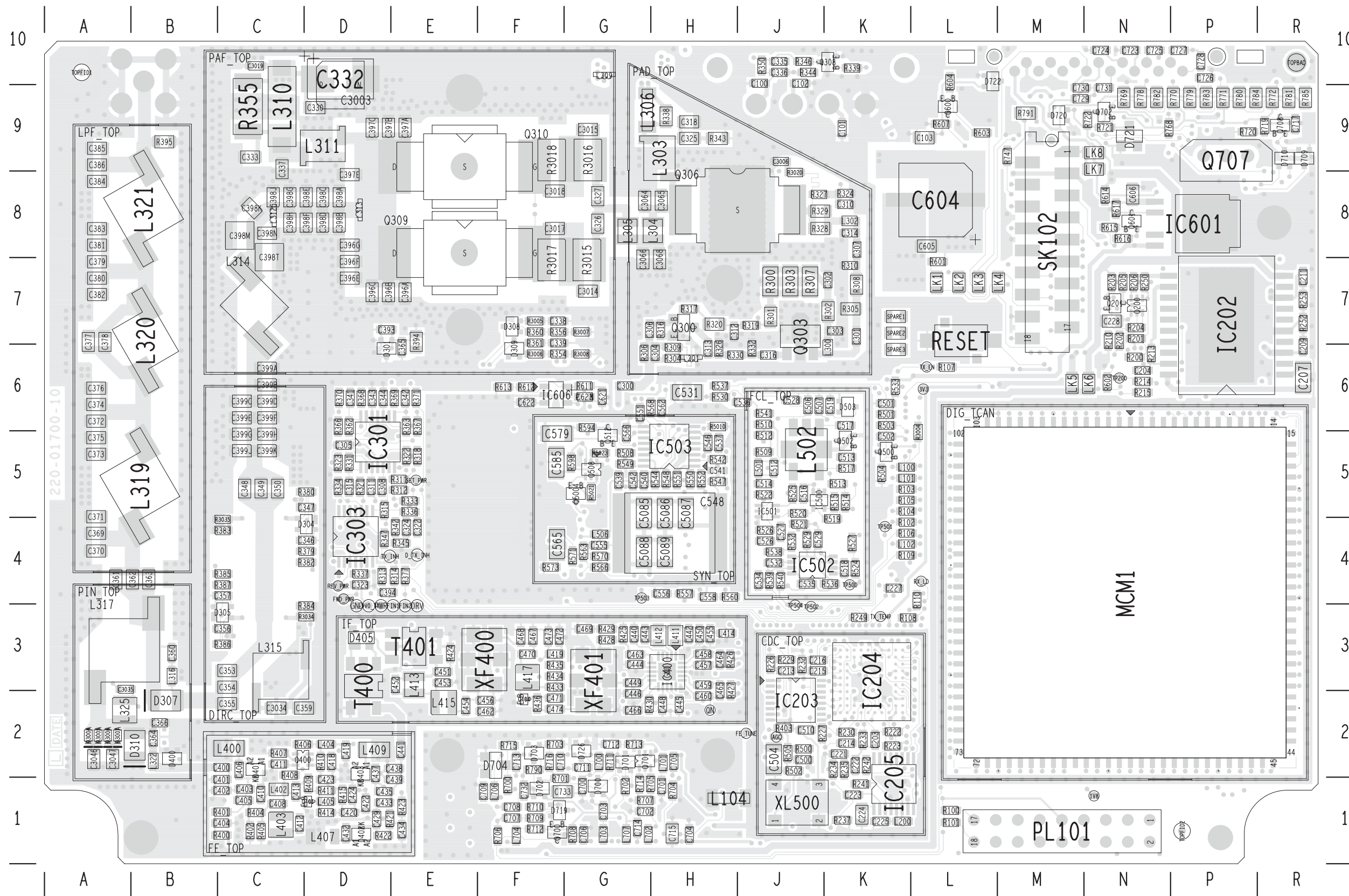
PCB IPN 220-01700-10

Ref	PCB	Circuit	Ref	PCB	Circuit	Ref	PCB	Circuit	Ref	PCB	Circuit	Ref	PCB	Circuit	Ref	PCB	Circuit	Ref	PCB	Circuit	Ref	PCB	Circuit
L502	1:J5	4-B2	Q4007	2:D2	7-D13	R217	2:M6	2-E4	R320	1:H7	3-C2	R4002	2:A2	7-E8	R5003	2:F5	4-C7	R554	2:H4	4-G9	R738	2:M7	6-E8
L503	2:J6	4-E3			7-C13	R218	2:K3	2-F4	R321	1:D5	3-J2	R4003	2:A2	7-F8	R5004	2:F5	4-C8	R555	2:H5	4-E9	R739	2:M6	6-E8
L504	2:J5	4-D4	Q400	1:C2	7-J3	R219	2:K1	2-H4	R322	1:E5	3-G2	R4004	2:A3	7-F8	R5005	2:F5	4-B9	R556	2:H4	4-F9	R740	2:P9	6-G10
L505	2:J5	4-E4			7-J4	R220	2:K2	2-G4	R323	1:D5	3-J3	R4008	2:B2	7-E9	R5006	2:G5	4-B9	R557	1:H4	4-J9	R741	2:P9	6-F10
L506	1:G4	4-J7	Q401	1:D1	7-H5	R221	2:K2	2-H5	R324	1:K8	3-E2	R400	1:C1	7-J3	R5007	2:G5	4-B9	R560	1:H4	4-J9	R742	2:R9	6-E10
L507	2:G5	4-B13	Q402	2:F3	7-E4	R222	1:K2	2-G5	R326	1:H6	3-B2	R4010	2:B3	7-F9	R5008	2:F5	4-B10	R563	1:G4	4-F10	R743	2:N9	6-D10
L510	2:G6	4-B11	Q403	2:G3	7-D4	R223	1:K2	2-G5	R327	1:J8	3-E3	R4011	2:B3	7-F9	R5009	2:E4	4-C10	R565	2:H4	4-F10	R744	2:N9	6-D10
L522	2:G5	4-C13	Q404	1:F2	7-H13	R224	2:K2	2-H6	R328	1:J8	3-E2	R4012	2:B3	7-F10	R500	1:J2	4-J1	R566	1:G4	4-F10	R745	2:N9	6-H10
L600	2:K8	5-E3	Q405	2:D2	7-J2	R225	2:J1	2-E5	R329	1:J8	3-D2	R4013	2:B3	7-F10	R5010	1:H6	4-E9	R568	1:H6	4-H10	R746	2:N9	6-D12
L601	2:L8	5-E7	Q5000	2:F5	4-C7	R226	1:J3	2-F7	R330	1:H6	3-B3	R4014	2:B2	7-F10	R5011	2:H4	4-E10	R569	2:H5	4-G10	R747	1:M9	6-C11
L602	2:K9	5-E3	Q5001	2:F5	4-B10	R227	1:J2	2-F7	R331	1:D5	3-J3	R4015	2:B2	7-E10	R5012	2:H5	4-E8	R570	1:G4	4-F11	R748	2:N9	6-H11
L700	1:G2	6-H3	Q5002	2:G4	4-D12	R228	2:J1	2-E4	R332	1:J6	3-B3	R4016	2:C2	7-F11	R5013	2:H5	4-F8	R571	1:G4	4-F11	R749	2:P9	6-G11
L701	1:H2	6-H3	Q5003	2:F4	4-D13	R229	1:J3	2-G7	R333	1:E5	3-H3	R4017	2:C2	7-F11	R5014	2:H6	4-E9	R573	1:F4	4-E11	R750	2:R9	6-F11
L702	1:G1	6-G3	Q5004	1:G5	4-H13	R230	1:K2	2-F8	R334	1:D5	3-J4	R4018	2:D3	7-C11	R5015	2:F4	4-D10	R594	1:G6	4-G7	R751	2:R9	6-E11
L703	1:G1	6-G3	Q500	1:K5	4-C1	R231	2:J1	2-E4	R335	2:D5	3-G1	R4019	2:D3	7-C11	R5018	2:G4	4-C12	R598	1:G5	4-J14	R753	2:N9	6-H11
L704	1:F1	6-B3	Q501	2:J4	4-D2	R232	1:J3	2-F8	R336	1:E5	3-H4	R401	1:C1	7-H3	R5019	2:G4	4-E12	R600	2:P7	5-D2	R754	2:P9	6-F11
L706	1:F1	6-B3	Q502	1:K5	4-B3	R233	1:K2	2-F8	R337	1:D4	3-K7	R4020	2:D2	7-D11	R501	1:K6	4-B1	R601	1:L7	5-E3	R755	2:R9	6-F11
L707	1:G1	6-C5	Q503	2:J5	4-E4	R234	1:K2	2-G8	R338	1:H9	3-F3	R4021	2:C3	7-F11	R5021	1:G5	4-H13	R602	1:N6	5-B2	R756	2:R9	6-E11
L708	2:M9	6-C12	Q505	2:H5	4-G10	R235	1:K2	2-F8	R339	1:K10	3-G3	R4022	2:C3	7-E11	R5023	1:G5	4-H12	R603	1:L9	5-D2	R757	2:P9	6-H11
L709	2:L9	6-B12	Q508	1:G5	4-J13	R236	2:J3	2-D9	R340	2:D4	3-G8	R4023	2:D2	7-C12	R5024	2:G4	4-E13	R604	1:L10	5-D2	R758	2:P9	6-G11
L711	2:M9	6-B12			4-H12	R237	1:K1	2-D11	R341	2:D4	3-B11	R4024	2:C3	7-F12	R5025	2:G4	4-E12	R605	2:N7	5-D3	R759	2:R9	6-F11
LK1	1:L7	5-E2	Q511	2:H5	4-E8	R238	2:J1	2-F11	R342	1:E4	3-H4	R4025	2:B3	7-E12	R5026	2:G4	4-D12	R607	1:L9	5-D2	R760	2:R9	6-E11
LK2	1:L7	5-E2			4-F8	R239	2:J2	2-F11	R343	1:H9	3-F3	R4026	2:D2	7-C12	R5027	2:G4	4-D11	R610	2:N7	5-D4	R761	2:N9	6-H11
LK3	1:L7	5-D2	Q512	1:G5	4-G7	R240	2:J2	2-F11	R344	1:J10	3-G4	R4027	2:D2	7-D12	R5028	2:G5	4-C12	R611	1:G6	5-C4	R762	2:P9	6-F11
LK4	1:M7	5-C2	Q600	1:L9	5-D2	R241	1:K1	2-D12	R345	1:E4	3-G4	R4028	2:D2	7-D12	R502	1:J2	4-J1	R612	1:F6	5-C4	R763	2:R9	6-E11
LK5	1:M6	6-C6	Q601	1:N8	5-F5	R242	1:K2	2-C12	R346	1:J10	3-G4	R4029	2:C3	7-E12	R5030	2:G4	4-C13	R613	1:F6	5-C4	R764	2:R9	6-E11
LK6	1:N6	6-C6	Q602	2:D6	5-F7	R243	2:J2	2-D9	R347	1:D4	3-H5	R402	1:C1	7-H3	R5031	2:G5	4-B11	R614	1:N8	5-G4	R765	2:M9	6-K11
LK7	1:N9	6-C9	Q603	2:D6	5-F8	R245	2:K2	2-F11	R350	1:J10	3-G5	R4030	2:C3	7-F12	R503	1:K6	4-B2	R615	1:N8	5-F4	R766	2:M9	6-J11
LK8	1:N9	6-C9	Q604	2:F2	5-C8	R246	2:K2	2-C13	R353	2:D4	3-J5	R4031	2:C2	7-C12	R504	1:K5	4-B1	R616	1:N8	5-F4	R767	2:M9	6-J11
LO2	2:E3	1-E12	Q605	2:F3	5-D8	R247	2:K2	2-G7	R354	1:F6	3-B5	R4032	2:C3	7-F12	R505	1:J2	4-J1	R617	1:N8	5-G5	R768	1:N9	6-H11
LO2_BOT	2:G3	7-A10	Q700	1:F1	6-C2	R249	1:K3	2-H8	R355	1:C9	3-F5	R4033	2:C3	7-F12	R506	2:J4	4-C2	R619	2:N8	5-B6	R769	1:N9	6-J12
LPF_TOP	1:B6	3-B14	Q701	1:G2	6-J3	R250	1:N7	2-D3	R356	1:F7	3-C6	R4034	2:C2	7-D13	R507	2:J4	4-E2	R620	2:J2	5-D6	R770	1:P9	6-G12
MCM1	1:N4	1-E6			6-J2	R251	2:K2	2-J3	R357	2:E4	3-J6	R4035	2:D3	7-E13	R508	1:G5	4-G8	R621	2:F3	5-D9	R771	1:P9	6-F12
MIC	2:E1	1-G2	Q702	1:N9	6-H5	R252	1:R7	2-C5	R358	2:G10	3-G6	R4036	2:D3	7-F13	R509	1:J5	4-G2	R624	2:J2	5-D6	R772	1:R9	6-E12
NB_BOT	2:C3	7-A8	Q703	2:N9	6-H10	R253	1:R7	2-C5	R359	2:G10	3-G6	R4037	2:D2	7-C13	R510	1:J6	4-G2	R626	2:E6	5-F7	R773	2:M9	6-K12
ON	2:E1	1-G2			6-H11	R3000	2:C5	3-J10	R360	1:F7	3-C6	R4038	2:D2	7-C13	R511	2:J4	4-C2	R627	2:D6	5-F7	R774	2:M9	6-J12
PAD_TOP	1:J8	3-B13			6-H11	R3001	2:C6	3-J11	R361	1:F7	3-B6	R4039	2:D2	7-C14	R512	1:J5	4-G2	R628	2:F2	5-C7	R775	2:M9	6-J12
PAF_TOP	1:E8	3-B14	Q704	2:P9	6-G11	R3002	2:C5	3-J11	R362	1:D6	3-C7	R403	1:J2	7-D1	R513	1:K5	4-H2	R629	2:D6	5-F8	R776	2:N9	6-D11
PIN_TOP	1:B3	3-B14			6-G10	R3003	2:C6	3-J11	R363	1:E6	3-A7	R4040	2:D2	7-C14	R514	1:K5	4-H2	R630	2:F2	5-D8	R777	2:N9	6-D11
PL100	2:K9	1-J1	Q705	2:P9	6-F11	R3004	1:L5	3-J12	R364	2:D4	3-H7	R404	1:C1	7-H3	R515	1:K5	4-J2	R700	1:F1	6-E2	R778	1:N9	6-J12
PL101	1:N1	1-D4			6-F10	R3005	1:F7	3-C6	R365	2:D4	3-G7	R405	1:C1	7-H3	R516	2:E4	4-C9	R701	1:F1	6-D2	R779	1:P9	6-G12
		1-C4	Q706	2:R9	6-E11	R3006	1:F6	3-B6	R366	1:D6	3-B7	R406	1:C2	7-J3	R517	1:K5	4-B3	R702	1:G1	6-J2	R780	1:P9	6-F12
		1-B4			6-E10	R3007	1:G7	3-C5	R367	1:E6	3-A7	R407	1:C2	7-H3	R518	2:K4	4-D3	R703	1:F2	6-D3	R781	1:R9	6-E12
PWR	1:D3	3-J1	Q707	1:P9	6-H12	R3008	1:G6	3-B5	R368	1:D6	3-C7	R408	1:C2	7-H4	R519	1:K4	4-J3	R704	1:H1	6-H2	R782	1:N9	6-J12
Q200	1:N7	2-C3	Q708	1:R9	6-J5	R3009	2:D4	3-G8	R369	1:E6	3-B7	R409	1:D1	7-H4	R520	1:J5	4-H3	R705	1:G1	6-J2	R783	1:P9	6-G12
		2-D2	Q709	2:N7	6-D3	R300	1:J7	3-F1	R370	1:D6	3-C8	R410	1:D2	7-J5	R521	1:J4	4-H3	R706	1:F1	6-C2	R784	1:P9	6-F12
Q201	1:N7	2-D3	QN	1:H2	7-B9	R3010	2:D4	3-B11	R371	1:E6	3-B7	R411	1:D1	7-J5	R522	1:J5	4-G3	R707	1:G1	6-J2	R785	1:R9	6-E12
Q202	2:K2	2-J3	R100	1:L1	1-B4	R3015	1:G7	3-E4	R372	2:E4	3-B8	R412	2:G3	7-C3	R523	2:J4	4-C3	R708	1:G1	6-F2	R788	2:N7	6-D3
Q300	1:H7	3-B2	R101	1:L1	1-B4	R3016	1:G9	3-D4	R373	2:D4	3-C8	R413	2:G3	7-C3	R524	1:K4	4-G4	R709	1:F1	6-C2	R789	2:P6	6-D3
Q301	2:E4	3-A11	R102	1:K4	1-D8	R3017	1:F7	3-E5	R374	2:D5	3-C8	R414	1:D1	7-H5	R525	1:J5	4-J4	R710	1:F1	6-B2	R790	1:F2	6-B3
Q302	2:E5	3-H3	R103	1:K5	1-D8	R3018	1:F9	3-D5	R375	2:E5	3-B9	R415	1:D1	7-J5	R526	1:J4	4-H4	R711	1:G2	6-J2	R791	1:M9	6-C11
Q303	1:J7	3-B3	R104	1:K5	1-D8	R301	1:J7	3-F1	R376	2:D5	3-A9	R416	2:G3	7-D4	R527	1:K4	4-F4	R712	1:F1	6-C2	R792	2:M9	6-B12
Q304	2:D5	3-C8	R105	1:K5	1-D8	R3020	1:J8	3-D3	R377	1:E4	3-B9	R417	2:F3	7-E4	R528	2:J5	4-E4	R713	1:G2	6-J3	RESET	1:L7	5-B2
Q305	2:E5	3-B8	R106	1:K4	1-G8	R302	1:K7	3-E1	R378	2:D5	3-A8	R418	2:G3	7-D4	R529	1:J4	4-G4	R714	1:G1	6-J3	REV_PWR	1:D4	3-C10
Q306	1:J8	3-D3	R107	1:L6	1-C8	R3034	1:D3	3-E10	R379	1:D4	3-F9	R419	2:G3	7-D4	R530	1:H6	4-B5	R715	1:F2	6-E3	RXD	2:E1	1-G2
Q307	2:D4	3-J5	R108	1:K3	1-E8	R3035	1:C4	3-D10	R380	1:D5	3-E9	R420	2:H3	7-C4	R531	2:J5	4-E4	R716	1:F2	6-D3	RX_LD	1:L4	1-E7
Q308	1:K10	3-G4	R109	1:K4	1-E8	R303	1:J7	3-F1	R381	2:D5	3-A9	R421	1:D1	7-J6	R532	1:J4	4-H5	R717	2:P6	6-C2	SET_PWR	1:E5	3-F2
Q309	1:E8	3-E5	R110	1:L4	1-E8	R304	1:H6	3-B1	R382	1:D4	3-F9	R422	1:D1	7-H6	R533	1:K6	4-B1	R718	2:P6	6-C3	SK100	2:G1	1-F2
Q310	1:E9	3-D5	R112	2:E3	1-E12	R3050	2:A2	3-F12	R383	1:C4	3-D9	R423	1:E1	7-H7	R534	2:J4	4-E5	R719	1:R9	6-K5			1-G2
Q311	2:H10	3-G5	R199	2:L6	1-H8	R3051	2:A2	3-F12	R384	1:D3	3-E10	R424	1:E3	7-H1									

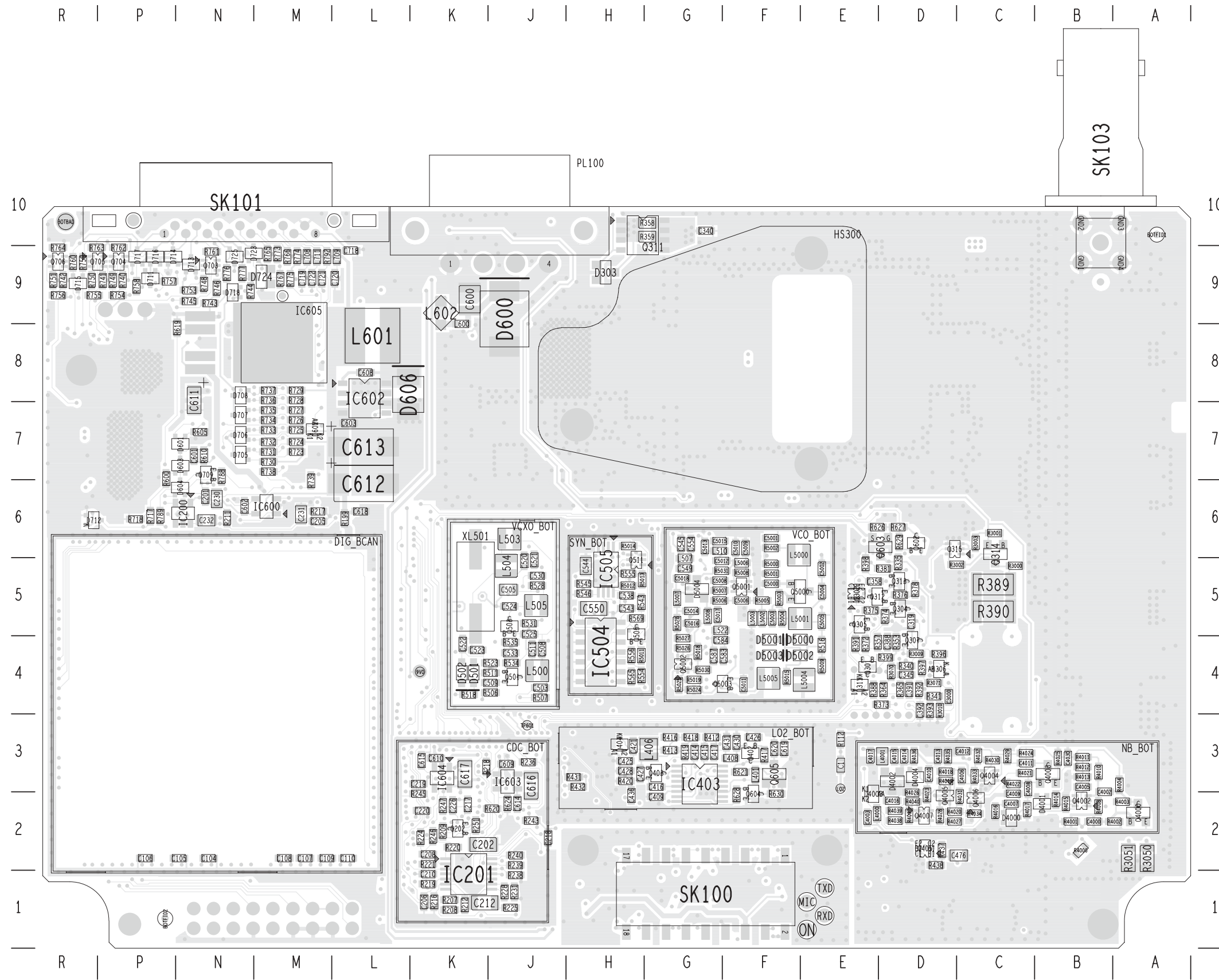
Grid Reference Index

PCB IPN 220-01700-10

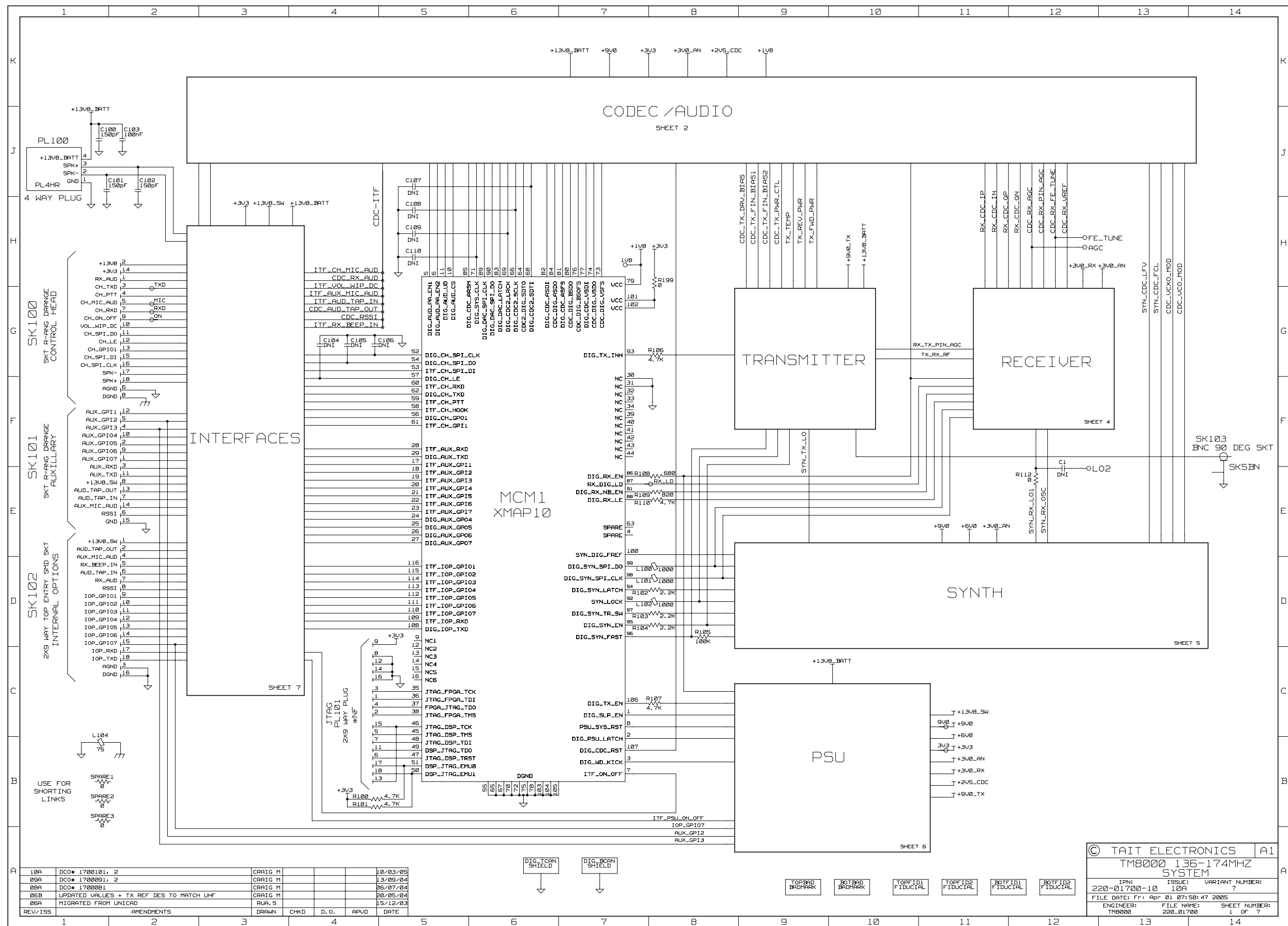
Ref	PCB	Circuit
TP200	1:N6	2-D4
TP500	1:K4	4-F3
TP501	1:K4	4-G5
TP502	1:J3	4-J6
TP503	1:G4	4-J11
TP504	1:J3	4-J2
TP601	2:J3	5-D8
TXD	2:E1	1-G2
TX_EN	1:L6	5-F8
TX_INH	1:D4	3-B9
TX_TEMP	1:K3	3-K13
VO	2:K4	1-C11
VCO_BOT	2:F5	4-A12
VCXO_BOT	2:J5	4-A10
XF400	1:F3	7-H12
XF401	1:G3	7-E9
XL500	1:J1	4-H2
XL501	2:K5	4-E4



TAIT ELECTRONICS IPN: 220-01700-10 ISS: A DATE: 31Mar05 SCALE: NTS
 TM8000 VHF 136-174MHZ MAIN BOARD LAYOUT-PRIMARY-SIDE

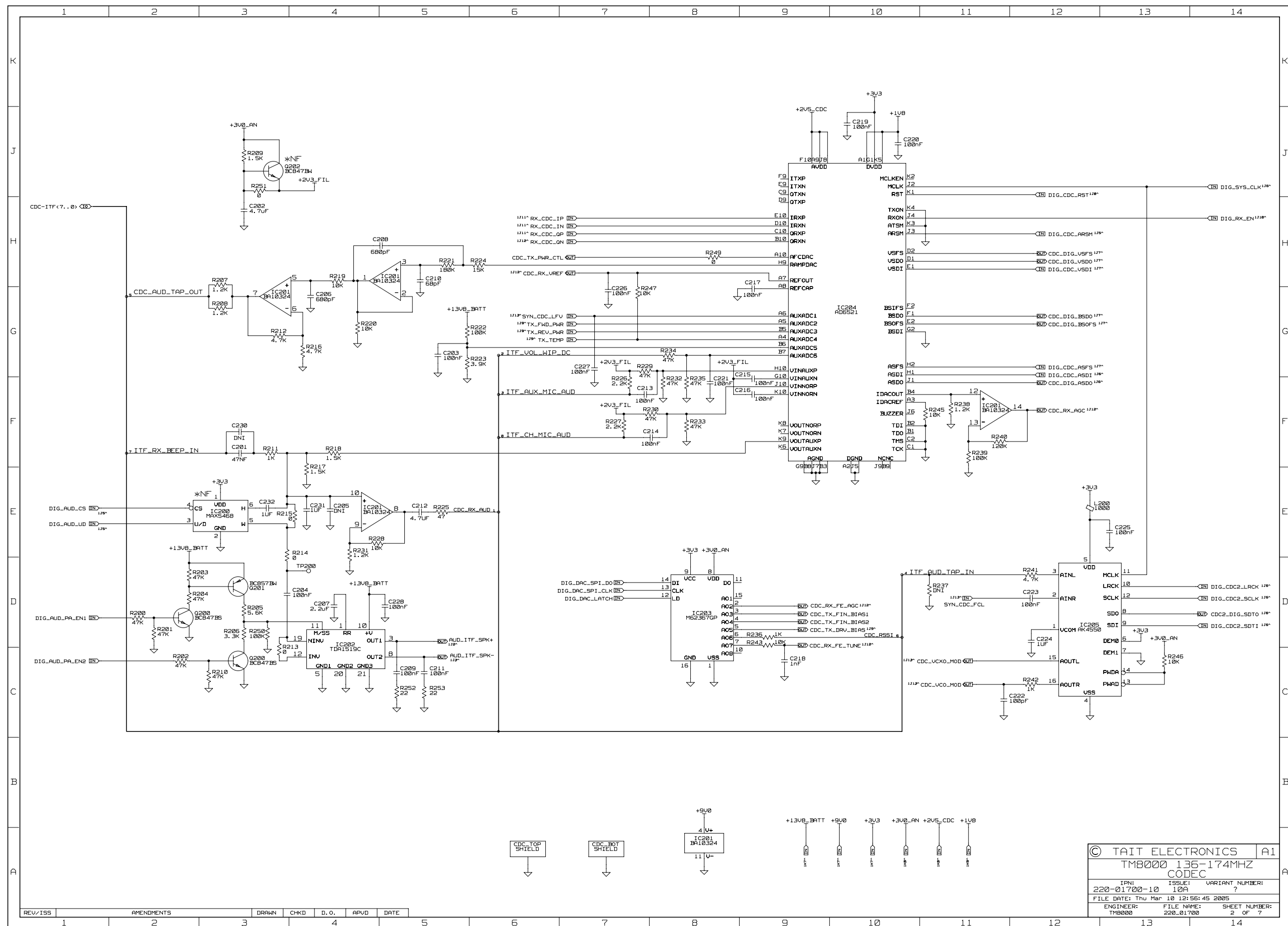


TAIT ELECTRONICS	IPN: 220-01700-10	ISS: A	DATE: 31Mar05	SCALE: NTS
TM8000 VHF 136-174MHZ MAIN BOARD LAYOUT-SECONDARY-SIDE				



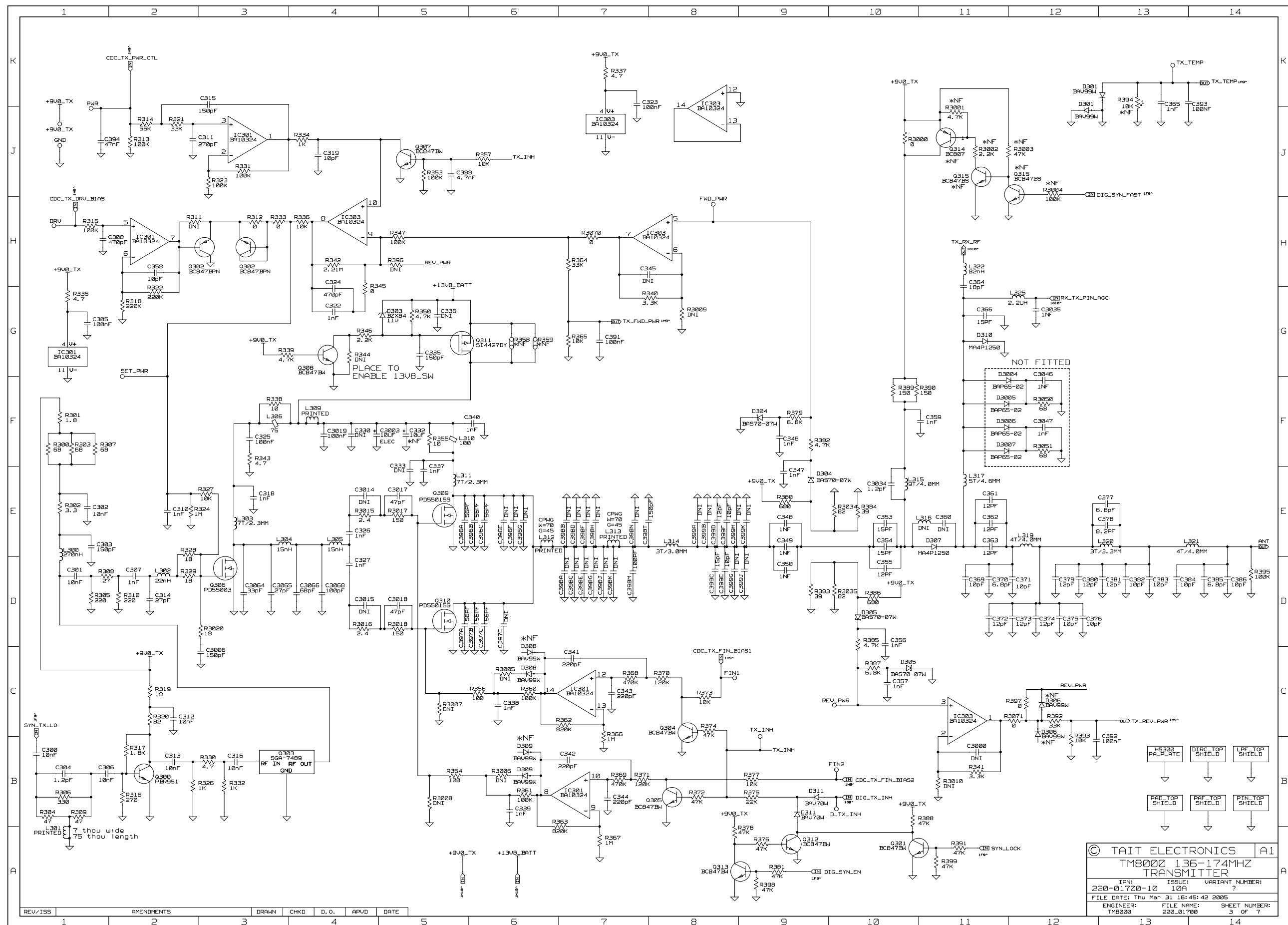
REV/ISS	AMENDMENTS	DRAWN	CHKD	D.O.	APVD	DATE
10A	DCO# 1700101, 2	CRAIG M				10/03/05
09A	DCO# 1700091, 2	CRAIG M				13/05/04
08A	DCO# 1700081	CRAIG M				05/07/04
06B	UPDATED VALUES + TX REF DES TO MATCH UHF	CRAIG M				02/05/04
06A	MIGRATED FROM UNICAD	RUA,S				15/12/03

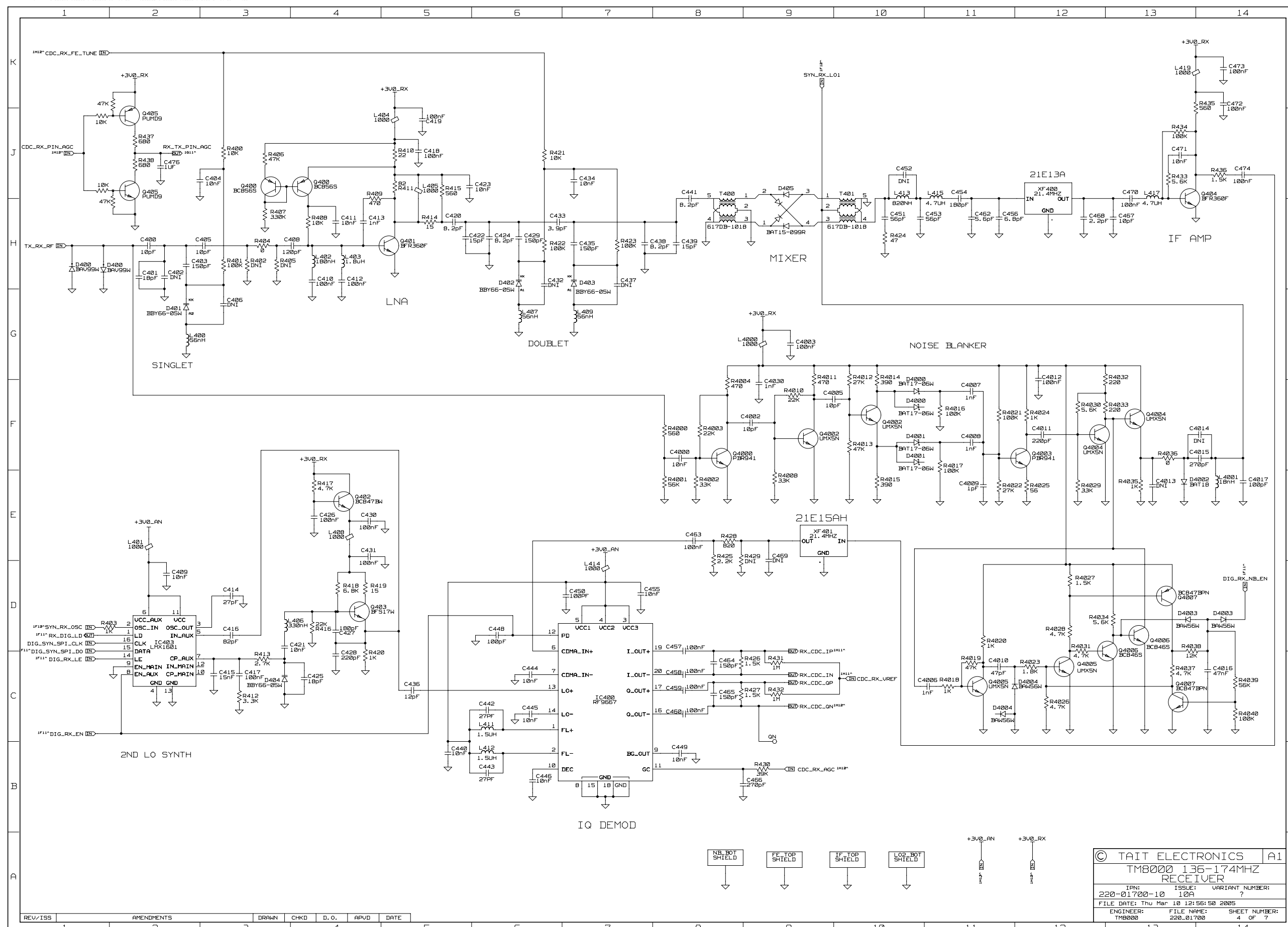
© TAIT ELECTRONICS | A1
 TM8000 136-174MHZ SYSTEM
 IPN: 220-01700-10 ISSUE: 10A VARIANT NUMBER: ?
 FILE DATE: Fri Apr 01 07:58:47 2005
 ENGINEER: TM8000 FILE NAME: 220_01700 SHEET NUMBER: 1 OF 7



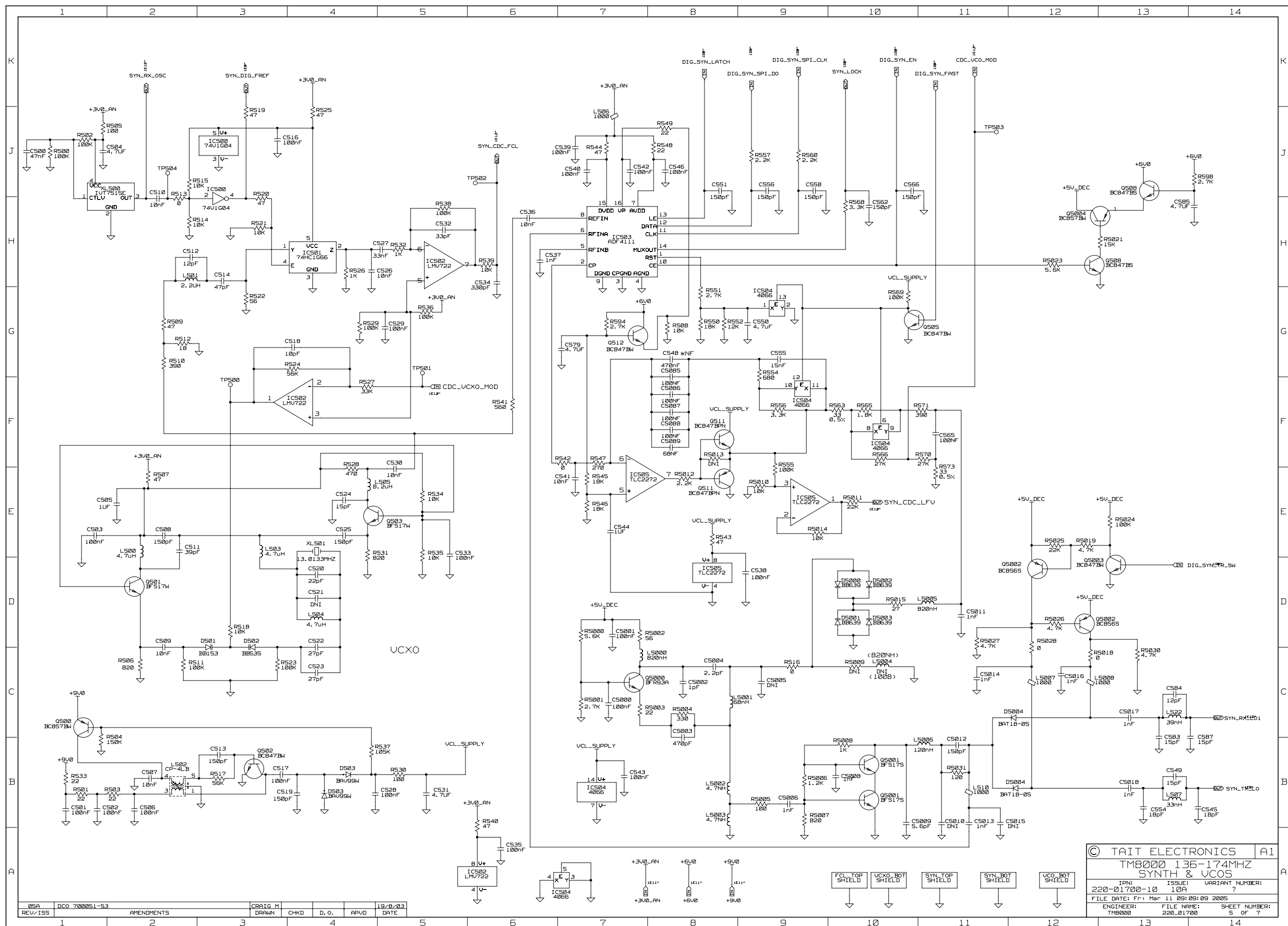
© TAIT ELECTRONICS		A1
TM8000 136-174MHZ CODEC		
IPN: 220-01700-10	ISSUE: 10A	VARIANT NUMBER: ?
FILE DATE: Thu Mar 10 12:56:45 2005		
ENGINEER: TM8000	FILE NAME: 220_01700	SHEET NUMBER: 2 OF 7

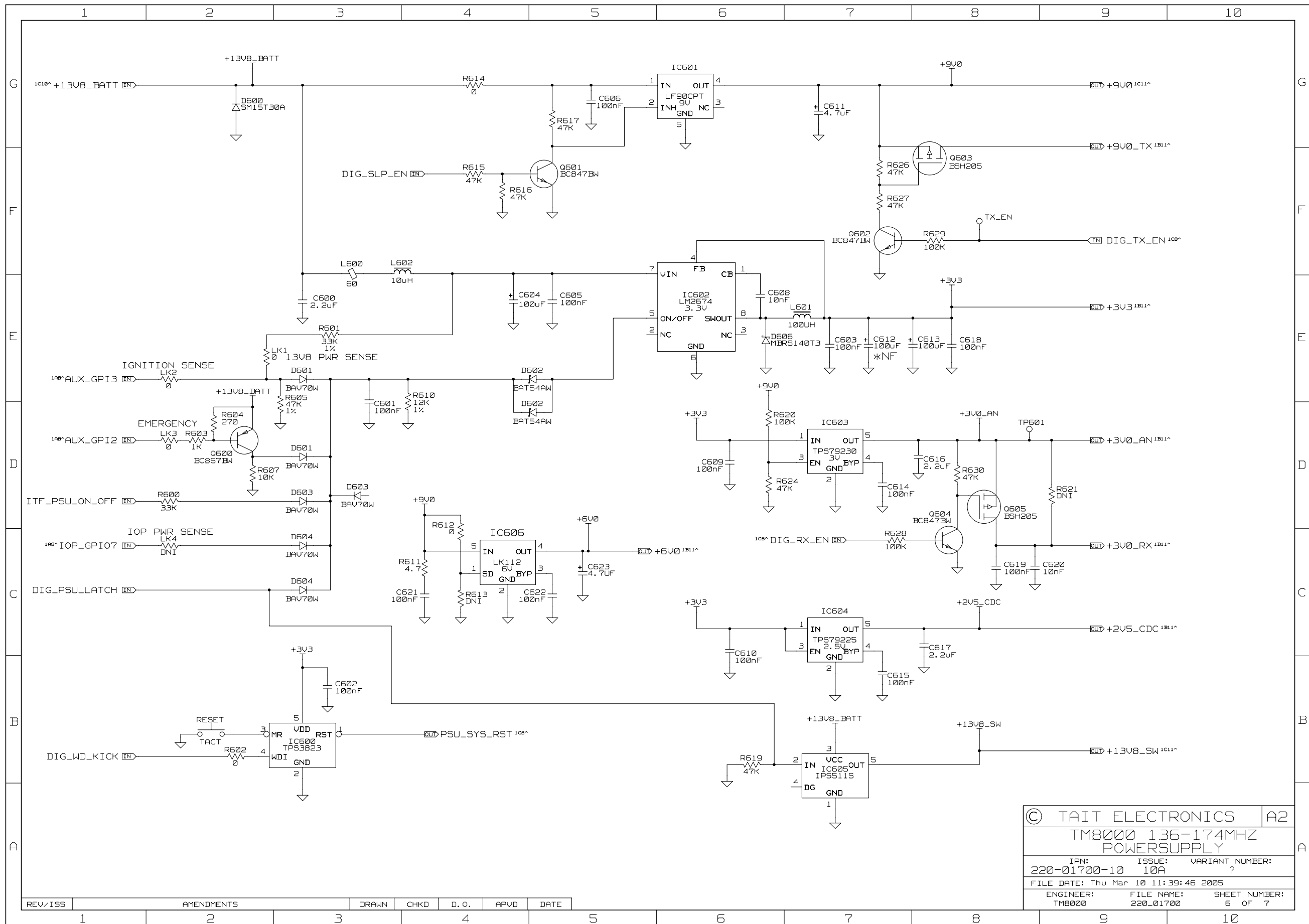
REV/ISS	AMENDMENTS	DRAWN	CHKD	D.O.	APUD	DATE
1						





© TAIT ELECTRONICS		A1
TM8000 136-174MHZ RECEIVER		
IPN: 220-01700-10	ISSUE: 10A	VARIANT NUMBER: ?
FILE DATE: Thu Mar 10 12:56:50 2005		
ENGINEER: TM8000	FILE NAME: 220_01700	SHEET NUMBER: 4 OF 7





© TAIT ELECTRONICS		A2
TM8000 136-174MHZ POWERSUPPLY		
IPN: 220-01700-10	ISSUE: 10A	VARIANT NUMBER: ?
FILE DATE: Thu Mar 10 11:39:46 2005		
ENGINEER: TM8000	FILE NAME: 220_01700	SHEET NUMBER: 6 OF 7

REV/ISS	AMENDMENTS	DRAWN	CHKD	D. O.	APVD	DATE
1						

